

BID / BUILD
BUILD

IMPORTANT DISCLAIMER
THIS DRAWING REPRESENTS VISUAL SUGGESTIONS ONLY. IT DOES NOT REPLACE THE KNOWLEDGE AND ADVICE OF A LICENSED STRUCTURAL ENGINEER. THE DESIGNER, OR HIS STAFF, ARE NOT QUALIFIED TO DETERMINE THE STRUCTURAL SUITABILITY OF THE DESIGN AND WILL NOT ASSUME RESPONSIBILITY OR LIABILITY FOR IMPROPER ENGINEERING OR USE THAT RESULTS IN DAMAGE OR INJURY TO PERSONS OR PROPERTY.

PAPER MILL PLAYHOUSE
22 Brookside Dr. Millburn, NJ 07041



A musical
Music by **Alan Menken**
Lyrics by **David Zippel**
Book by **Kwame Kwei-Armah** and **Robert Horn**
Based on the Disney film written by Ron Clements, John Musker, Donald McEnery, Bob Shaw and Irene Mecchi and directed by Ron Clements and John Musker

PRODUCER
DISNEY THEATRICAL GROUP
PAPER MILL PLAYHOUSE
DIRECTOR
LEAR DEBESSONET
SET DESIGNER
DANE LAFFREY
LIGHTING DESIGNER
JEFF CROITER

DRAWING
GROUNDPLAN
COLUMNS IN HOME POSITION

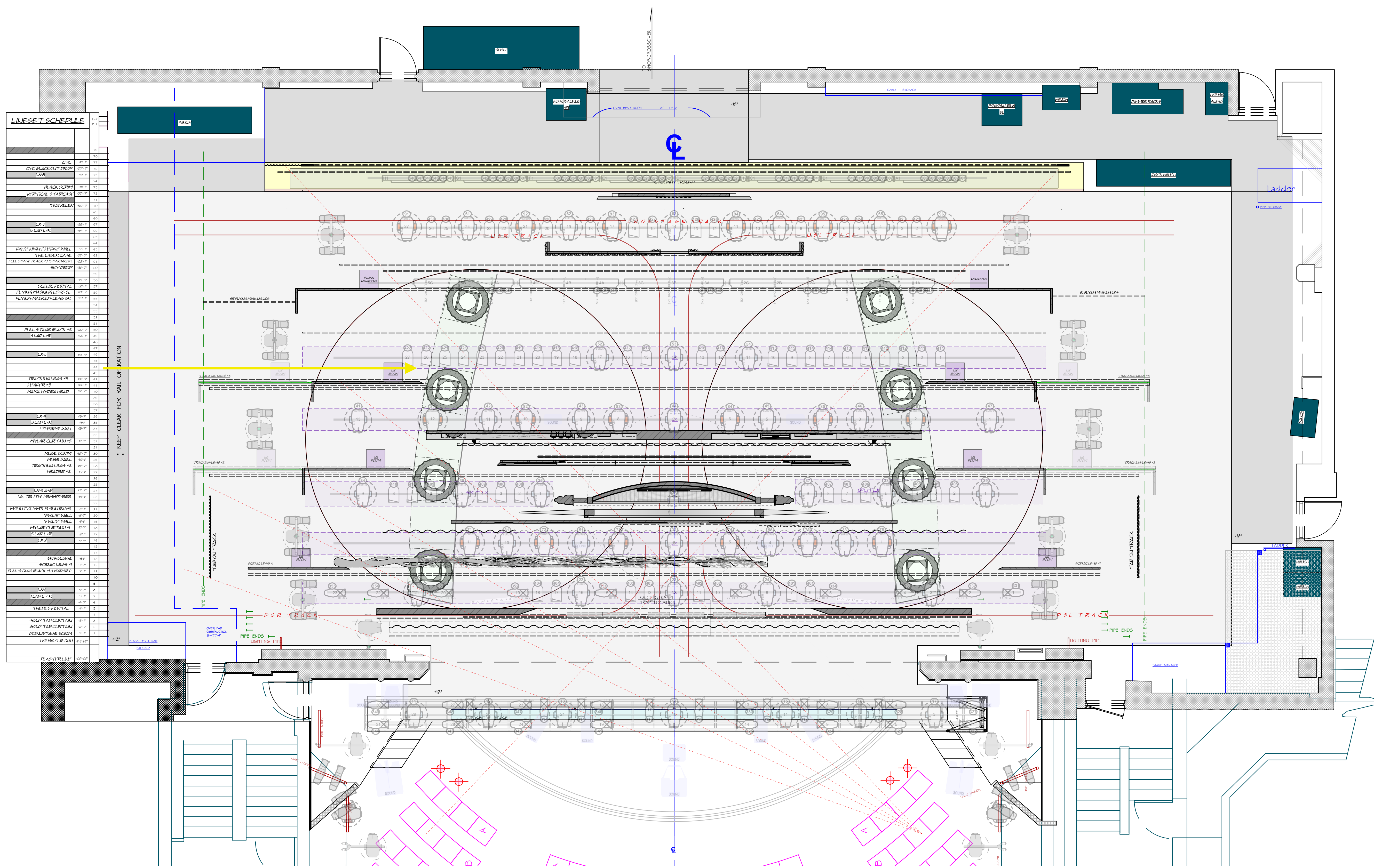
DATE
12.30.2022
VERSION
3.4

DRAWN BY
VIVIENNE LIU **MATT IACOZZA**
VIVIENNELIUSSETDESIGN@GMAIL.COM MATTHEW.IACOZZA@GMAIL.COM
412.378.6000 202.227.7919

PLATE / OF

01

SCALE
1/4" = 1'-0"



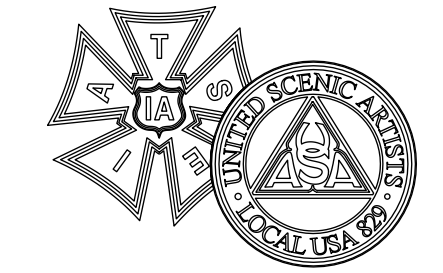
LINESET SCHEDULE

CIC	10' x 10'	10
CYCLORAMA PREP	LX 1	1
BLACK SCRM	10' x 10'	10
VERTICAL STAIRCASE	10' x 10'	10
TRAVELER	10' x 10'	10
LX 7	10' x 10'	10
LADP-R	10' x 10'	10
DATE LIGHT FRAME WALL	10' x 10'	10
THE LADDER CASE	10' x 10'	10
FULL STAGE BLACK TRUSS PREP	10' x 10'	10
SKY PREP	10' x 10'	10
SCALIC PORTAL	10' x 10'	10
FLYBAR PROGRAM LEAS 10	10' x 10'	10
FLYBAR PROGRAM LEAS 12	10' x 10'	10
FULL STAGE BLACK 10	10' x 10'	10
TRUCK LEAS 10	10' x 10'	10
TRUCK LEAS 12	10' x 10'	10
TRUCK LEAS 14	10' x 10'	10
TRUCK LEAS 16	10' x 10'	10
TRUCK LEAS 18	10' x 10'	10
TRUCK LEAS 20	10' x 10'	10
TRUCK LEAS 22	10' x 10'	10
TRUCK LEAS 24	10' x 10'	10
TRUCK LEAS 26	10' x 10'	10
TRUCK LEAS 28	10' x 10'	10
TRUCK LEAS 30	10' x 10'	10
TRUCK LEAS 32	10' x 10'	10
TRUCK LEAS 34	10' x 10'	10
TRUCK LEAS 36	10' x 10'	10
TRUCK LEAS 38	10' x 10'	10
TRUCK LEAS 40	10' x 10'	10
TRUCK LEAS 42	10' x 10'	10
TRUCK LEAS 44	10' x 10'	10
TRUCK LEAS 46	10' x 10'	10
TRUCK LEAS 48	10' x 10'	10
TRUCK LEAS 50	10' x 10'	10
TRUCK LEAS 52	10' x 10'	10
TRUCK LEAS 54	10' x 10'	10
TRUCK LEAS 56	10' x 10'	10
TRUCK LEAS 58	10' x 10'	10
TRUCK LEAS 60	10' x 10'	10
TRUCK LEAS 62	10' x 10'	10
TRUCK LEAS 64	10' x 10'	10
TRUCK LEAS 66	10' x 10'	10
TRUCK LEAS 68	10' x 10'	10
TRUCK LEAS 70	10' x 10'	10
TRUCK LEAS 72	10' x 10'	10
TRUCK LEAS 74	10' x 10'	10
TRUCK LEAS 76	10' x 10'	10
TRUCK LEAS 78	10' x 10'	10
TRUCK LEAS 80	10' x 10'	10
TRUCK LEAS 82	10' x 10'	10
TRUCK LEAS 84	10' x 10'	10
TRUCK LEAS 86	10' x 10'	10
TRUCK LEAS 88	10' x 10'	10
TRUCK LEAS 90	10' x 10'	10
TRUCK LEAS 92	10' x 10'	10
TRUCK LEAS 94	10' x 10'	10
TRUCK LEAS 96	10' x 10'	10
TRUCK LEAS 98	10' x 10'	10
TRUCK LEAS 100	10' x 10'	10
TRUCK LEAS 102	10' x 10'	10
TRUCK LEAS 104	10' x 10'	10
TRUCK LEAS 106	10' x 10'	10
TRUCK LEAS 108	10' x 10'	10
TRUCK LEAS 110	10' x 10'	10
TRUCK LEAS 112	10' x 10'	10
TRUCK LEAS 114	10' x 10'	10
TRUCK LEAS 116	10' x 10'	10
TRUCK LEAS 118	10' x 10'	10
TRUCK LEAS 120	10' x 10'	10
TRUCK LEAS 122	10' x 10'	10
TRUCK LEAS 124	10' x 10'	10
TRUCK LEAS 126	10' x 10'	10
TRUCK LEAS 128	10' x 10'	10
TRUCK LEAS 130	10' x 10'	10
TRUCK LEAS 132	10' x 10'	10
TRUCK LEAS 134	10' x 10'	10
TRUCK LEAS 136	10' x 10'	10
TRUCK LEAS 138	10' x 10'	10
TRUCK LEAS 140	10' x 10'	10
TRUCK LEAS 142	10' x 10'	10
TRUCK LEAS 144	10' x 10'	10
TRUCK LEAS 146	10' x 10'	10
TRUCK LEAS 148	10' x 10'	10
TRUCK LEAS 150	10' x 10'	10
TRUCK LEAS 152	10' x 10'	10
TRUCK LEAS 154	10' x 10'	10
TRUCK LEAS 156	10' x 10'	10
TRUCK LEAS 158	10' x 10'	10
TRUCK LEAS 160	10' x 10'	10
TRUCK LEAS 162	10' x 10'	10
TRUCK LEAS 164	10' x 10'	10
TRUCK LEAS 166	10' x 10'	10
TRUCK LEAS 168	10' x 10'	10
TRUCK LEAS 170	10' x 10'	10
TRUCK LEAS 172	10' x 10'	10
TRUCK LEAS 174	10' x 10'	10
TRUCK LEAS 176	10' x 10'	10
TRUCK LEAS 178	10' x 10'	10
TRUCK LEAS 180	10' x 10'	10
TRUCK LEAS 182	10' x 10'	10
TRUCK LEAS 184	10' x 10'	10
TRUCK LEAS 186	10' x 10'	10
TRUCK LEAS 188	10' x 10'	10
TRUCK LEAS 190	10' x 10'	10
TRUCK LEAS 192	10' x 10'	10
TRUCK LEAS 194	10' x 10'	10
TRUCK LEAS 196	10' x 10'	10
TRUCK LEAS 198	10' x 10'	10
TRUCK LEAS 200	10' x 10'	10
TRUCK LEAS 202	10' x 10'	10
TRUCK LEAS 204	10' x 10'	10
TRUCK LEAS 206	10' x 10'	10
TRUCK LEAS 208	10' x 10'	10
TRUCK LEAS 210	10' x 10'	10
TRUCK LEAS 212	10' x 10'	10
TRUCK LEAS 214	10' x 10'	10
TRUCK LEAS 216	10' x 10'	10
TRUCK LEAS 218	10' x 10'	10
TRUCK LEAS 220	10' x 10'	10
TRUCK LEAS 222	10' x 10'	10
TRUCK LEAS 224	10' x 10'	10
TRUCK LEAS 226	10' x 10'	10
TRUCK LEAS 228	10' x 10'	10
TRUCK LEAS 230	10' x 10'	10
TRUCK LEAS 232	10' x 10'	10
TRUCK LEAS 234	10' x 10'	10
TRUCK LEAS 236	10' x 10'	10
TRUCK LEAS 238	10' x 10'	10
TRUCK LEAS 240	10' x 10'	10
TRUCK LEAS 242	10' x 10'	10
TRUCK LEAS 244	10' x 10'	10
TRUCK LEAS 246	10' x 10'	10
TRUCK LEAS 248	10' x 10'	10
TRUCK LEAS 250	10' x 10'	10
TRUCK LEAS 252	10' x 10'	10
TRUCK LEAS 254	10' x 10'	10
TRUCK LEAS 256	10' x 10'	10
TRUCK LEAS 258	10' x 10'	10
TRUCK LEAS 260	10' x 10'	10
TRUCK LEAS 262	10' x 10'	10
TRUCK LEAS 264	10' x 10'	10
TRUCK LEAS 266	10' x 10'	10
TRUCK LEAS 268	10' x 10'	10
TRUCK LEAS 270	10' x 10'	10
TRUCK LEAS 272	10' x 10'	10
TRUCK LEAS 274	10' x 10'	10
TRUCK LEAS 276	10' x 10'	10
TRUCK LEAS 278	10' x 10'	10
TRUCK LEAS 280	10' x 10'	10
TRUCK LEAS 282	10' x 10'	10
TRUCK LEAS 284	10' x 10'	10
TRUCK LEAS 286	10' x 10'	10
TRUCK LEAS 288	10' x 10'	10
TRUCK LEAS 290	10' x 10'	10
TRUCK LEAS 292	10' x 10'	10
TRUCK LEAS 294	10' x 10'	10
TRUCK LEAS 296	10' x 10'	10
TRUCK LEAS 298	10' x 10'	10
TRUCK LEAS 300	10' x 10'	10
TRUCK LEAS 302	10' x 10'	10
TRUCK LEAS 304	10' x 10'	10
TRUCK LEAS 306	10' x 10'	10
TRUCK LEAS 308	10' x 10'	10
TRUCK LEAS 310	10' x 10'	10
TRUCK LEAS 312	10' x 10'	10
TRUCK LEAS 314	10' x 10'	10
TRUCK LEAS 316	10' x 10'	10
TRUCK LEAS 318	10' x 10'	10
TRUCK LEAS 320	10' x 10'	10
TRUCK LEAS 322	10' x 10'	10
TRUCK LEAS 324	10' x 10'	10
TRUCK LEAS 326	10' x 10'	10
TRUCK LEAS 328	10' x 10'	10
TRUCK LEAS 330	10' x 10'	10
TRUCK LEAS 332	10' x 10'	10
TRUCK LEAS 334	10' x 10'	10
TRUCK LEAS 336	10' x 10'	10
TRUCK LEAS 338	10' x 10'	10
TRUCK LEAS 340	10' x 10'	10
TRUCK LEAS 342	10' x 10'	10
TRUCK LEAS 344	10' x 10'	10
TRUCK LEAS 346	10' x 10'	10
TRUCK LEAS 348	10' x 10'	10
TRUCK LEAS 350	10' x 10'	10
TRUCK LEAS 352	10' x 10'	10
TRUCK LEAS 354	10' x 10'	10
TRUCK LEAS 356	10' x 10'	10
TRUCK LEAS 358	10' x 10'	10
TRUCK LEAS 360	10' x 10'	10
TRUCK LEAS 362	10' x 10'	10
TRUCK LEAS 364	10' x 10'	10
TRUCK LEAS 366	10' x 10'	10
TRUCK LEAS 368	10' x 10'	10
TRUCK LEAS 370	10' x 10'	10
TRUCK LEAS 372	10' x 10'	10
TRUCK LEAS 374	10' x 10'	10
TRUCK LEAS 376	10' x 10'	10
TRUCK LEAS 378	10' x 10'	10
TRUCK LEAS 380	10' x 10'	10
TRUCK LEAS 382	10' x 10'	10
TRUCK LEAS 384	10' x 10'	10
TRUCK LEAS 386	10' x 10'	10
TRUCK LEAS 388	10' x 10'	10
TRUCK LEAS 390	10' x 10'	10
TRUCK LEAS 392	10' x 10'	10
TRUCK LEAS 394	10' x 10'	10
TRUCK LEAS 396	10' x 10'	10
TRUCK LEAS 398	10' x 10'	10
TRUCK LEAS 400	10' x 10'	10
TRUCK LEAS 402	10' x 10'	10
TRUCK LEAS 404	10' x 10'	10
TRUCK LEAS 406	10' x 10'	10
TRUCK LEAS 408	10' x 10'	10
TRUCK LEAS 410	10' x 10'	10
TRUCK LEAS 412	10' x 10'	10
TRUCK LEAS 414	10' x 10'	10
TRUCK LEAS 416	10' x 10'	10
TRUCK LEAS 418	10' x 10'	10
TRUCK LEAS 420	10' x 10'	10
TRUCK LEAS 422	10' x 10'	10
TRUCK LEAS 424	10' x 10'	10
TRUCK LEAS 426	10' x 10'	10
TRUCK LEAS 428	10' x 10'	10
TRUCK LEAS 430	10' x 10'	10
TRUCK LEAS 432	10' x 10'	10
TRUCK LEAS 434	10' x 10'	10
TRUCK LEAS 436	10' x 10'	10
TRUCK LEAS 438	10' x 10'	10
TRUCK LEAS 440	10' x 10'	10
TRUCK LEAS 442	10' x 10'	10
TRUCK LEAS 444	10' x 10'	10
TRUCK LEAS 446	10' x 10'	10
TRUCK LEAS 448	10' x 10'	10
TRUCK LEAS 450	10' x 10'	10
TRUCK LEAS 452	10' x 10'	10
TRUCK LEAS 454	10' x 10'	10
TRUCK LEAS 456	10' x 10'	10
TRUCK LEAS 458	10' x 10'	10
TRUCK LEAS 460	10' x 10'	10
TRUCK LEAS 462	10' x 10'	10
TRUCK LEAS 464	10' x 10'	10
TRUCK LEAS 466	10' x 10'	10
TRUCK LEAS 468	10' x 10'	10
TRUCK LEAS 470	10' x 10'	10
TRUCK LEAS 472	10' x 10'	10
TRUCK LEAS 474	10' x 10'	10
TRUCK LEAS 476	10' x 10'	10
TRUCK LEAS 478	10' x 10'	10
TRUCK LEAS 480	10' x 10'	10
TRUCK LEAS 482	10' x 10'	10
TRUCK LEAS 484	10' x 10'	10
TRUCK LEAS 486	10' x 10'	10
TRUCK LEAS 488	10' x 10'	10
TRUCK LEAS 490	10' x 10'	10
TRUCK LEAS 492	10' x 10'	10
TRUCK LEAS 494	10' x 10'	10
TRUCK LEAS 496	10' x 10'	10
TRUCK LEAS 498	10' x 10'	10
TRUCK LEAS 500	10' x 10'	10

REVISION ON 12.13:
 1. ADDED DOOR FRONT HARDWARE INFO.
 2. MODIFIED LATCHES POSITION BASED ON HARDWARE DIMENSIONS.

PROOF PURVIEW (EXCEPT FOR WAGON BASES)

REVISED ON 12.13



BID / BUILD
BUILD

IMPORTANT DISCLAIMER
 THIS DRAWING REPRESENTS VISUAL CONCEPTS AND CONSTRUCTION SUGGESTIONS ONLY. IT DOES NOT REPLACE THE KNOWLEDGE AND ADVICE OF A LICENSED STRUCTURAL ENGINEER. THE DESIGNER, OR HIS STAFF, ARE NOT QUALIFIED TO DETERMINE THE STRUCTURAL SUITABILITY OF THE DESIGN AND WILL NOT ASSUME RESPONSIBILITY OR LIABILITY FOR IMPROPER ENGINEERING OR USE THAT RESULTS IN DAMAGE OR INJURY TO PERSONS OR PROPERTY.

PAPER MILL PLAYHOUSE
 22 Brookside Dr, Millburn, NJ 07041

HERCULES

A musical
 Music by **Alan Menken**
 Lyrics by **David Zippel**
 Book by **Kwame Kwei-Armah and Robert Horn**
 Based on the Disney film written by Ron Clements, John Musker, Donald Mcenery, Bob Shaw and Irene Mecchi and directed by Ron Clements and John Musker

PRODUCER
 DISNEY THEATRICAL GROUP
 PAPER MILL PLAYHOUSE
 DIRECTOR
LEAR DEBESSONET
 SET DESIGNER
DANE LAFFREY
 LIGHTING DESIGNER
JEFF CROITER

DRAWING DESPINA'S HOUSE PART 1

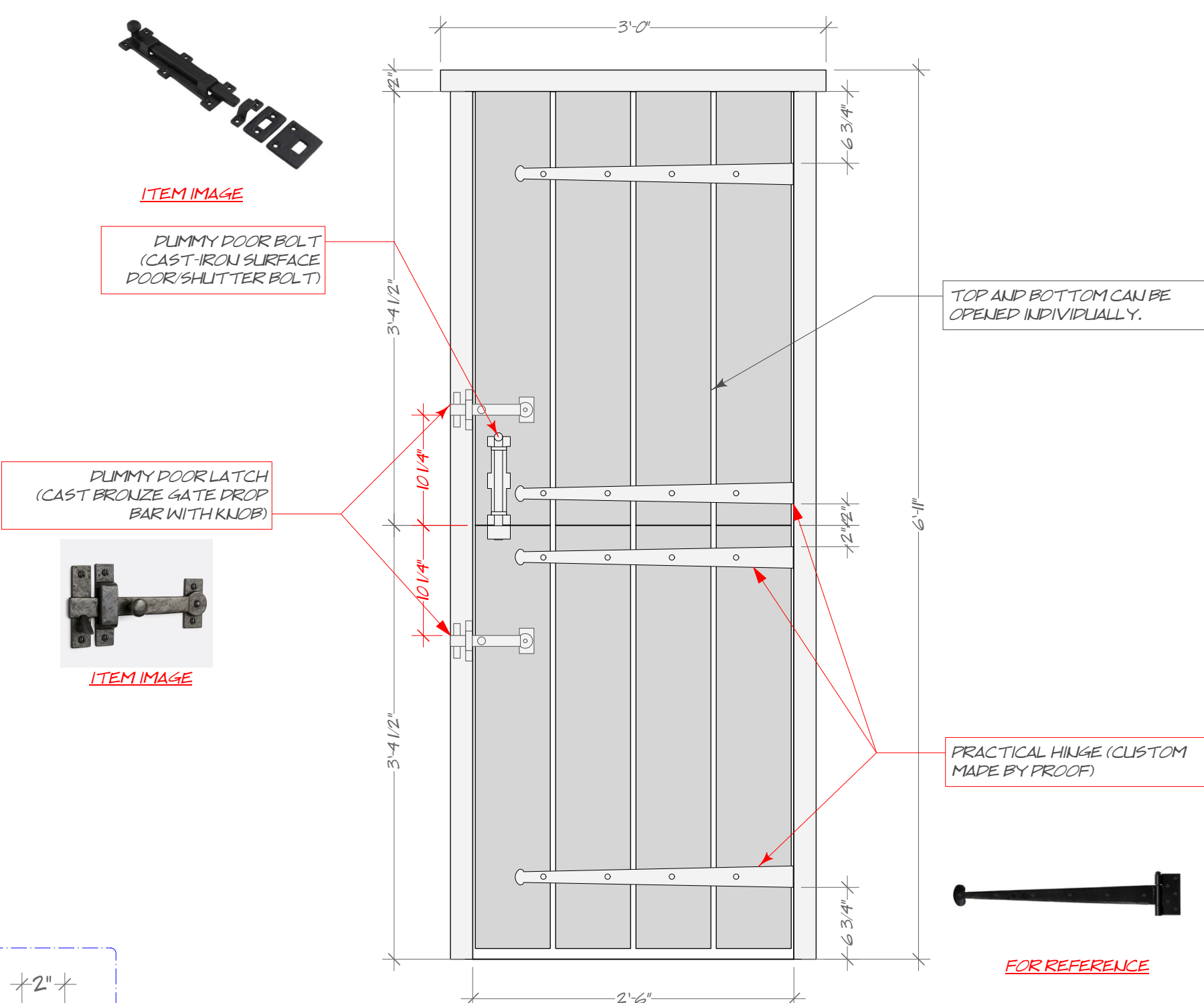
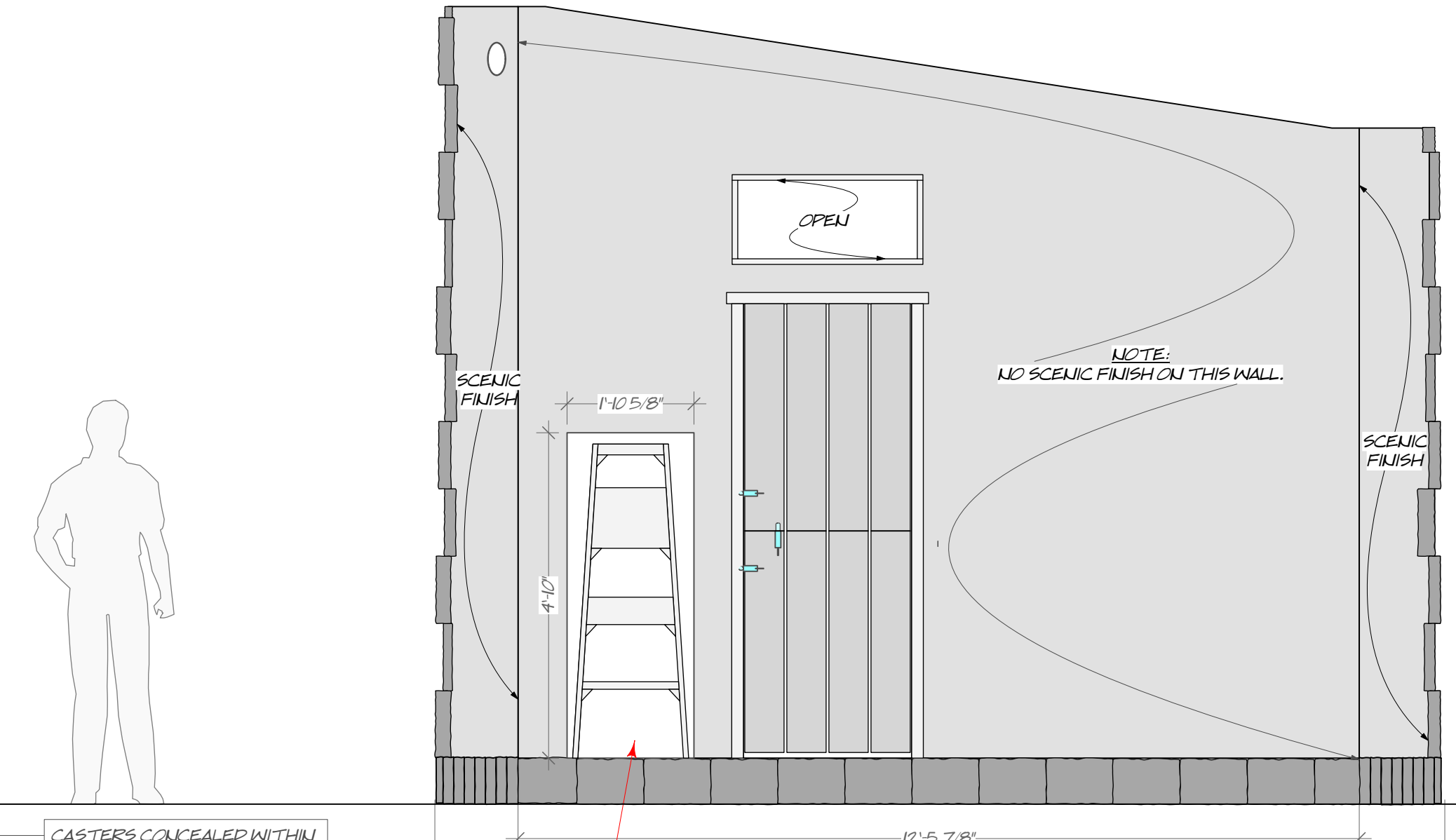
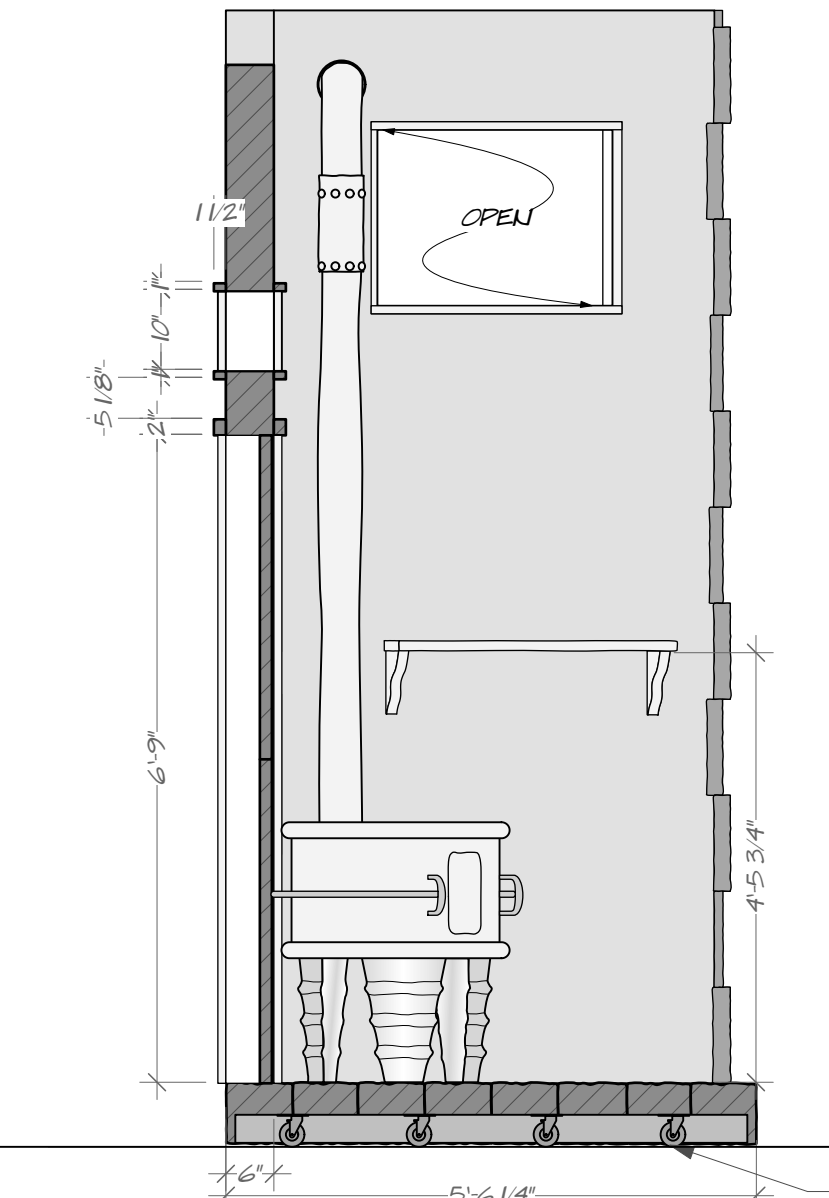
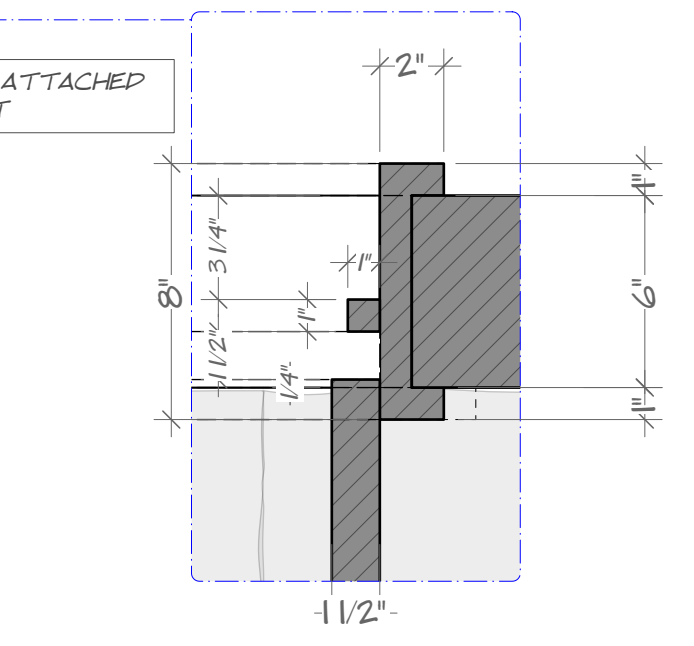
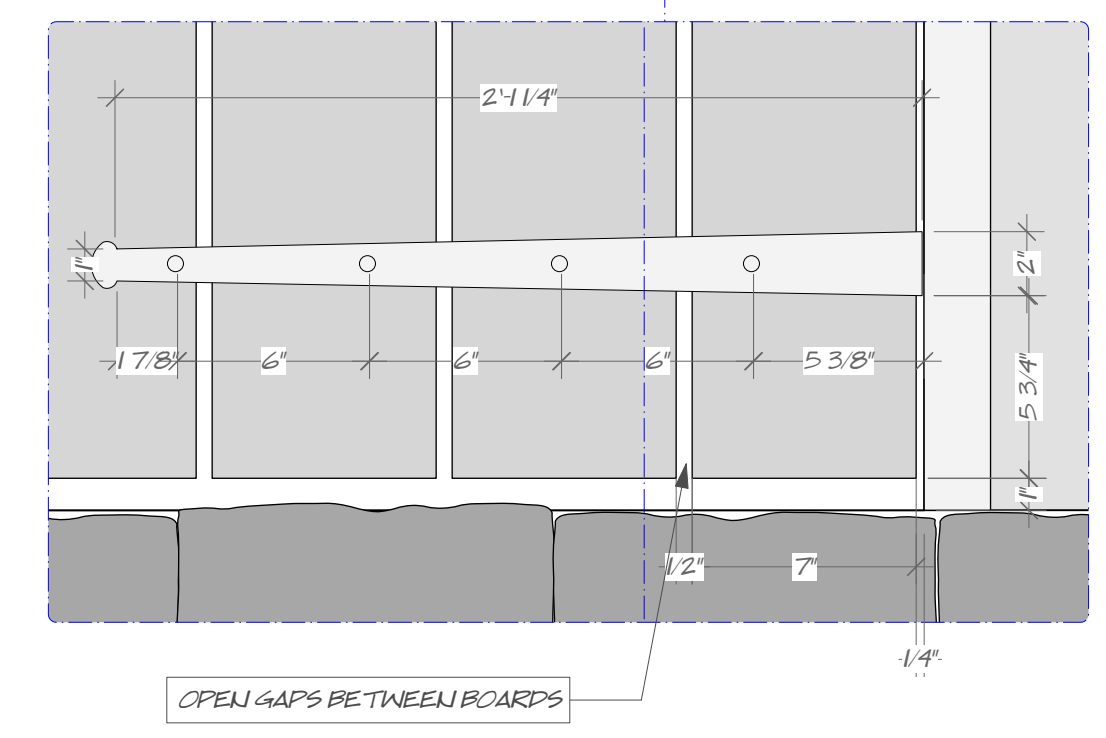
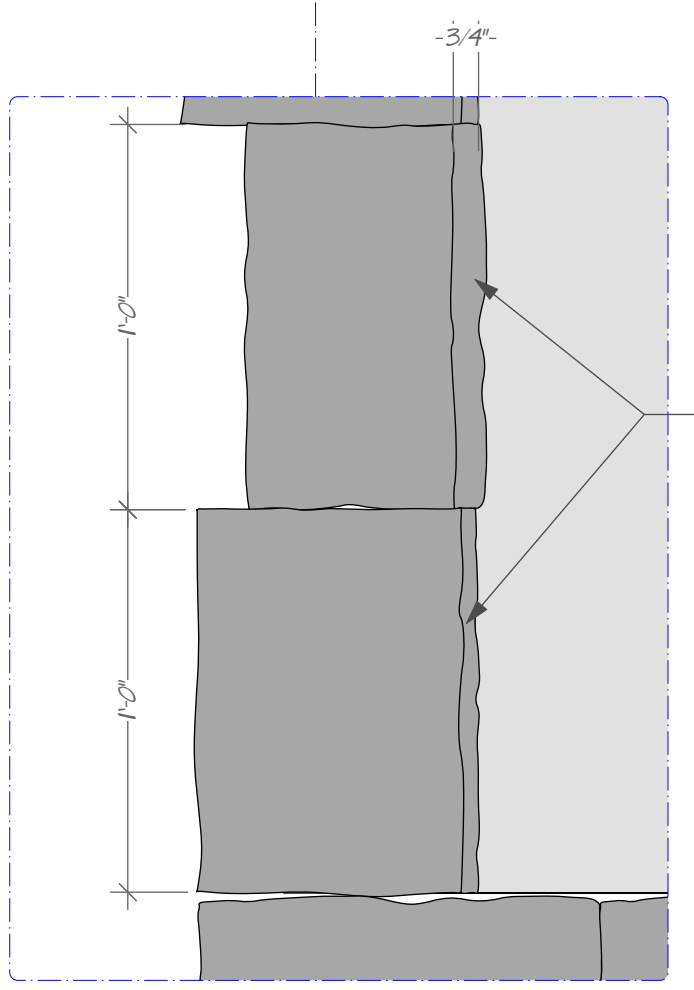
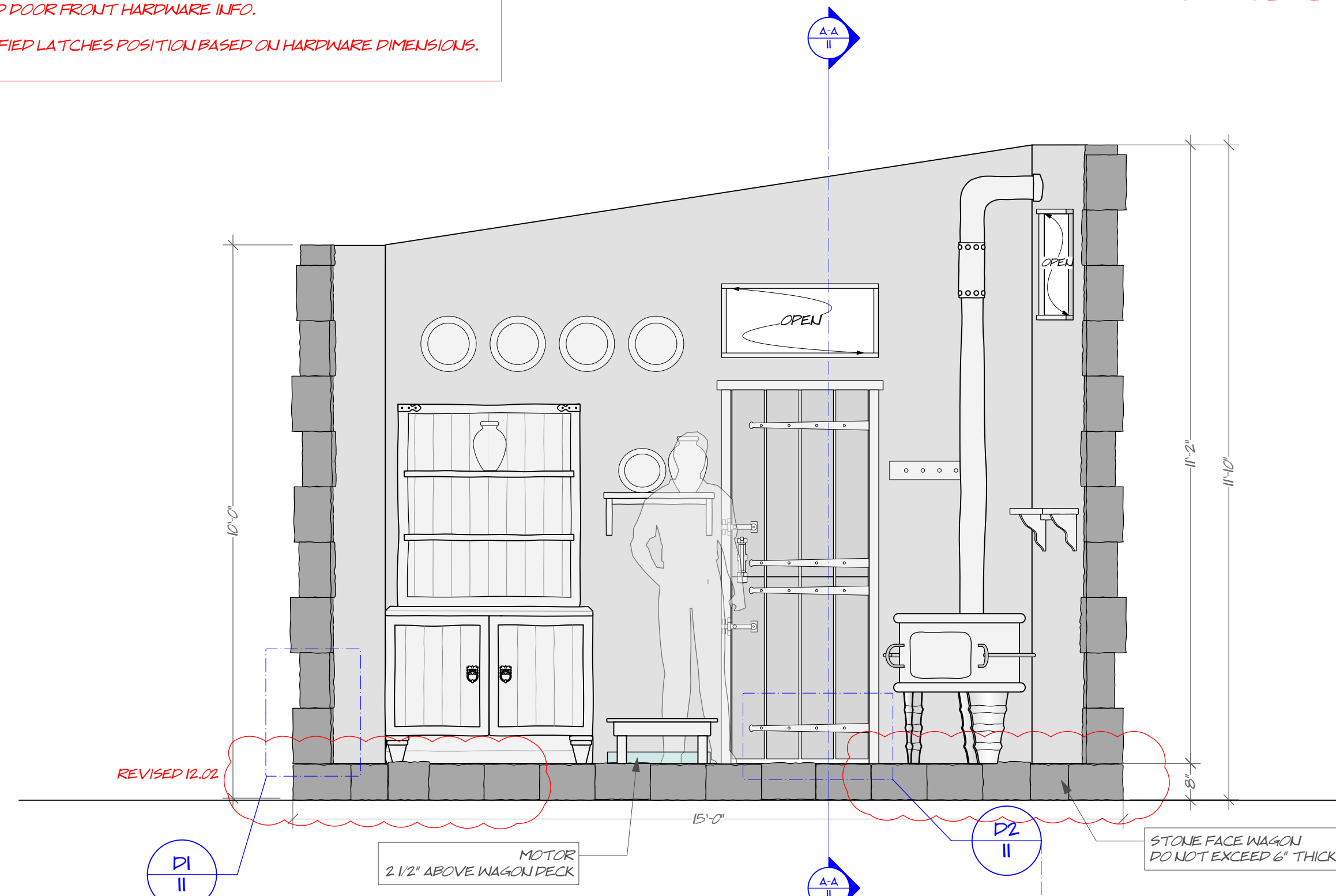
DATE
12.13.2022
 VERSION
3.4

DRAWN BY
VIVIENNE LIU
MATT IACOZZA

PLATE / OF

11

SCALE
 AS NOTED



- DOOR HARDWARE LINKS:**
- DUMMY DOOR LATCH:**
https://www.rejuvenation.com/catalog/products/cast-bronze-gate-drop-bar-with-knob?cm_ver=PLA&cm_cat=Google&cm_pla=default&cm_item=C103502_14334675725&gclid=Cj0KCQIA4uCbDdARisAH5yUI9OQ8AX0951zODSg-3Wghq9yzCH2WRvHftM0IGP4v0SQ_Gy5v0aAsGUEALw_wcB
 - HINGE (reference link):**
<https://www.houseofantiquehardware.com/strap-hinges-for-doors-bean-iron?quantity=1&strap-hinge-size=28>
 - SHUTTER BOLT:**
<https://www.houseofantiquehardware.com/8-1-4-inch-cast-iron-surface-door-shutter-bolt?quantity=1&door-bolt-length=9>

- NOTES:**
- UNIT TRACKS ON UPSTAGE SL CURVED TRACK.
 - ALL PARTS OF THE UNIT SHOULD BE IRREGULAR CONSTRUCTION. THERE ARE VERY FEW STRAIGHT LINES/ANGLES IN THIS UNIT. CONSTRUCTION SHOULD HAVE A RUSTIC QUALITY. REFER TO RESEARCH IMAGES AND DISCUSS WITH DESIGNER.
 - WAGON NEEDS COUNTER ROTATION MECHANICS TO ENSURE THE FRONT OF THE WAGON ALWAYS FACES DOWNSTAGE WHEN TRACKING ON CURVED TRACK.
 - WAGON WILL BE STORED IN THE AIR.
 - DOOR GAG DETAILS SEE GAG PAGE.

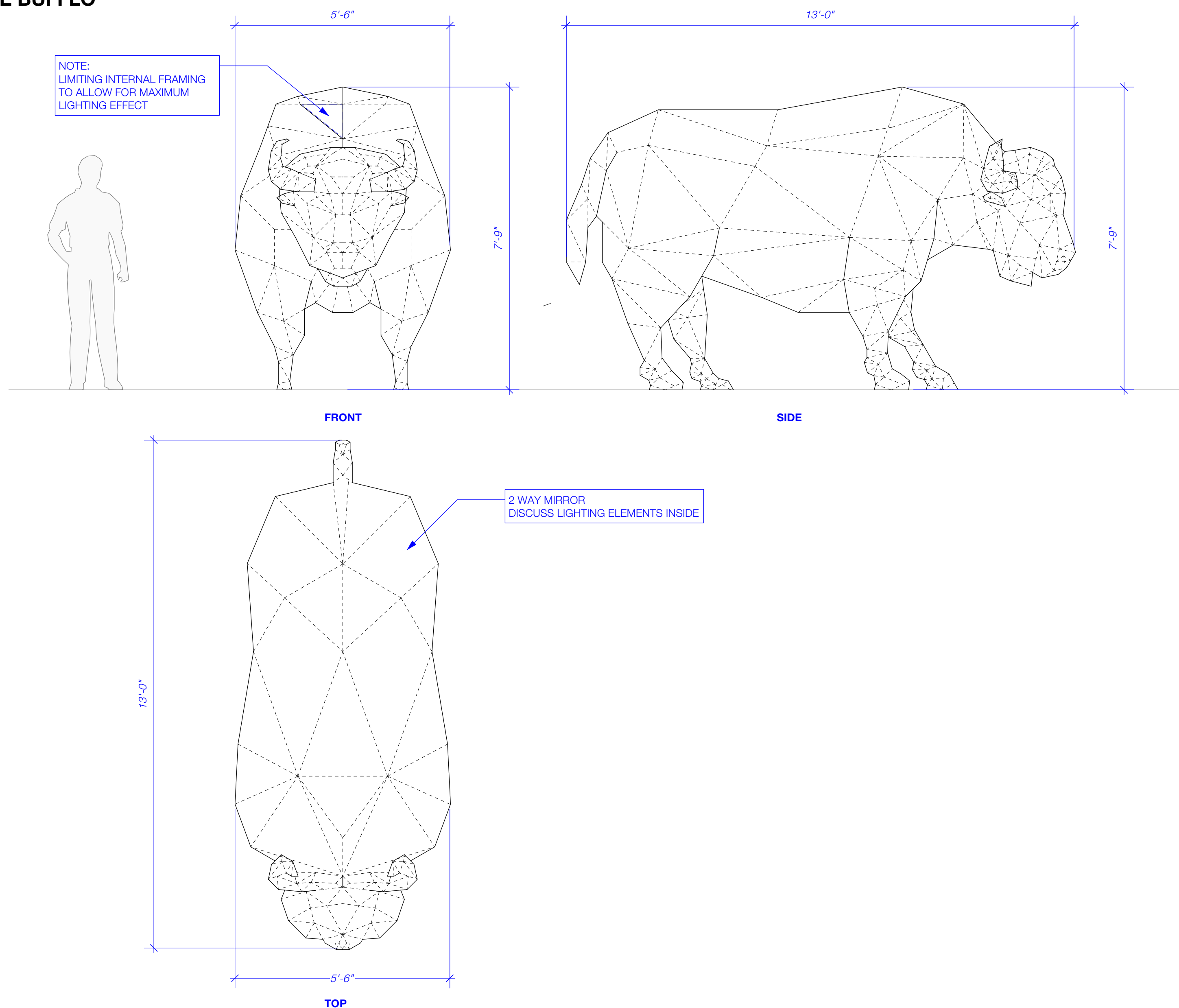


NIGHT TIME REFERENCE

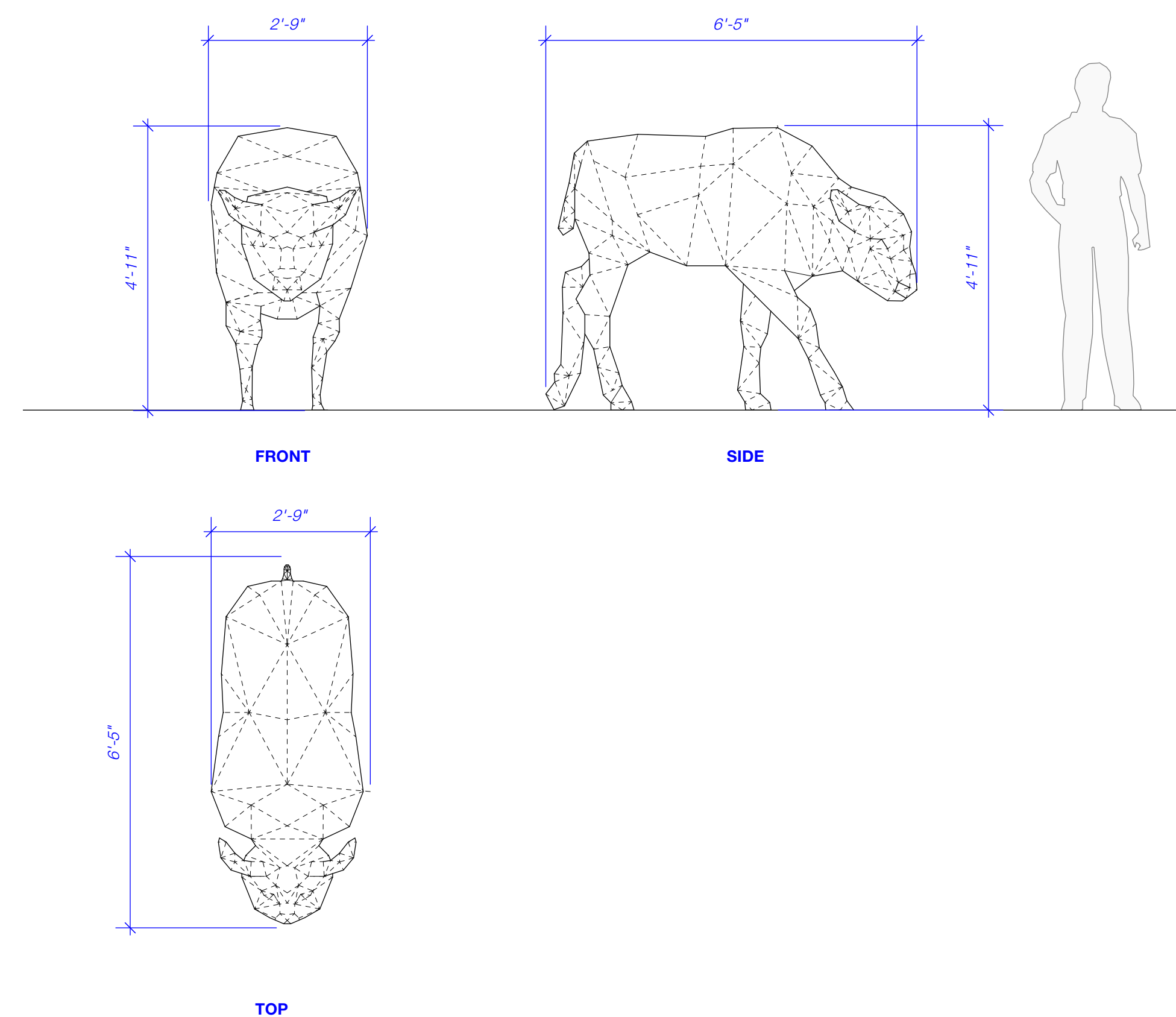
2 WAY MIRROR REFERENCE.
-USE 2 WAY MIRROR. DISCUSS DETAILS W/ DESIGNERS.

NOTES:
-REFER TO 3D MODEL FOR CONSTRUCTION GEOMETRY.
-NEED TO AD INTERNAL POINTS TO ATTACH LIGHTING INSTRUMENTS.

LARGE BUFFLO



SMALL BUFFLO



DAYTIME RENDERS FOR REFERENCE



CLINT RAMOS

scenic & costume designer

WWW.CLINTRAMOS.COM
646.221.2746
CLINT@CLINTRAMOS.COM



BID / BUILD
BID

SUMMER FOR THE CITY

LINCOLN CENTER PLAZA - JRP

PRODUCTION TEAM

PRODUCER:
LINCOLN CENTER

DIRECTOR:

WRITTEN BY:

SCENIC DESIGNER:
CLINT RAMOS

COSTUME DESIGNER:

LIGHTING DESIGNER:

SOUND DESIGNER:

IMPORTANT DISCLAIMER:

The designer is responsible for the visual aspects of the production only, and the specification of the designer's designs relate solely to the appearance of the design and not to matters of safety. The designer agrees to make prompt correcting alterations to any specifications found to be incompatible with proper safety precautions.

SUMMER FOR THE CITY
THE BUFFLOS

DATE: DEC 21, 2023 VERSION: PRE-01

DRAWN BY:
VIVIENNE LIU
vivienneliusetdesign@gmail.com / 412-3786030

PLATE NO.

1

THE BUFFLOS
SCALE: 1/2"=1'-0"

SCALE: AS NOTED

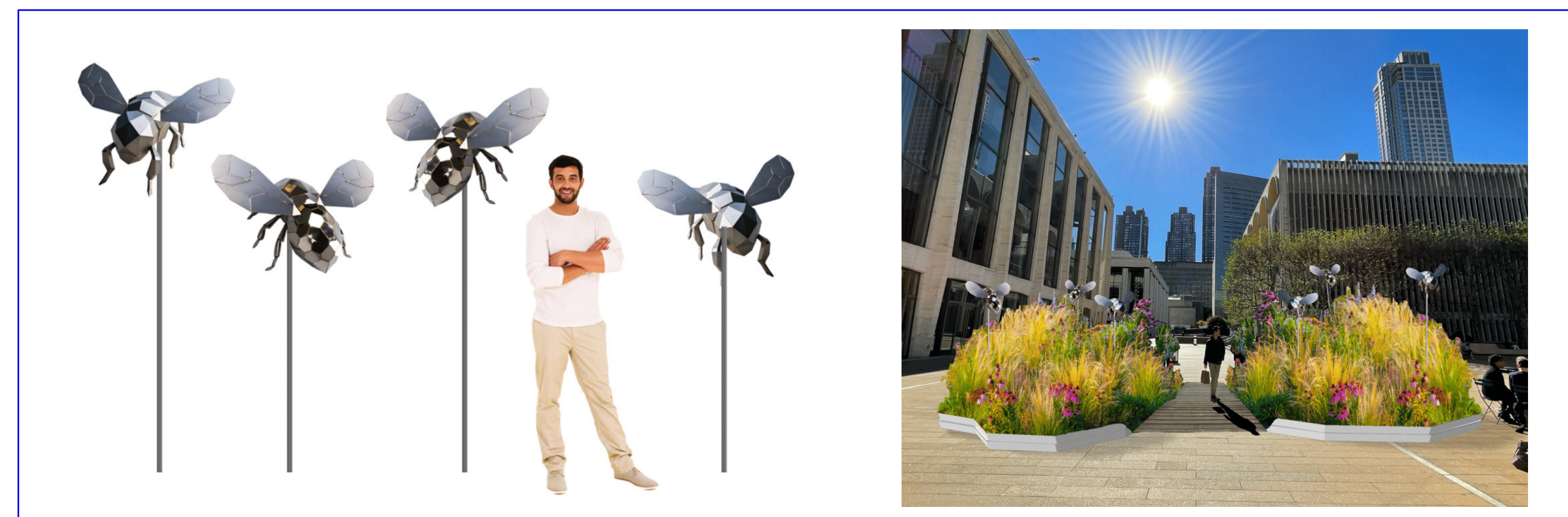
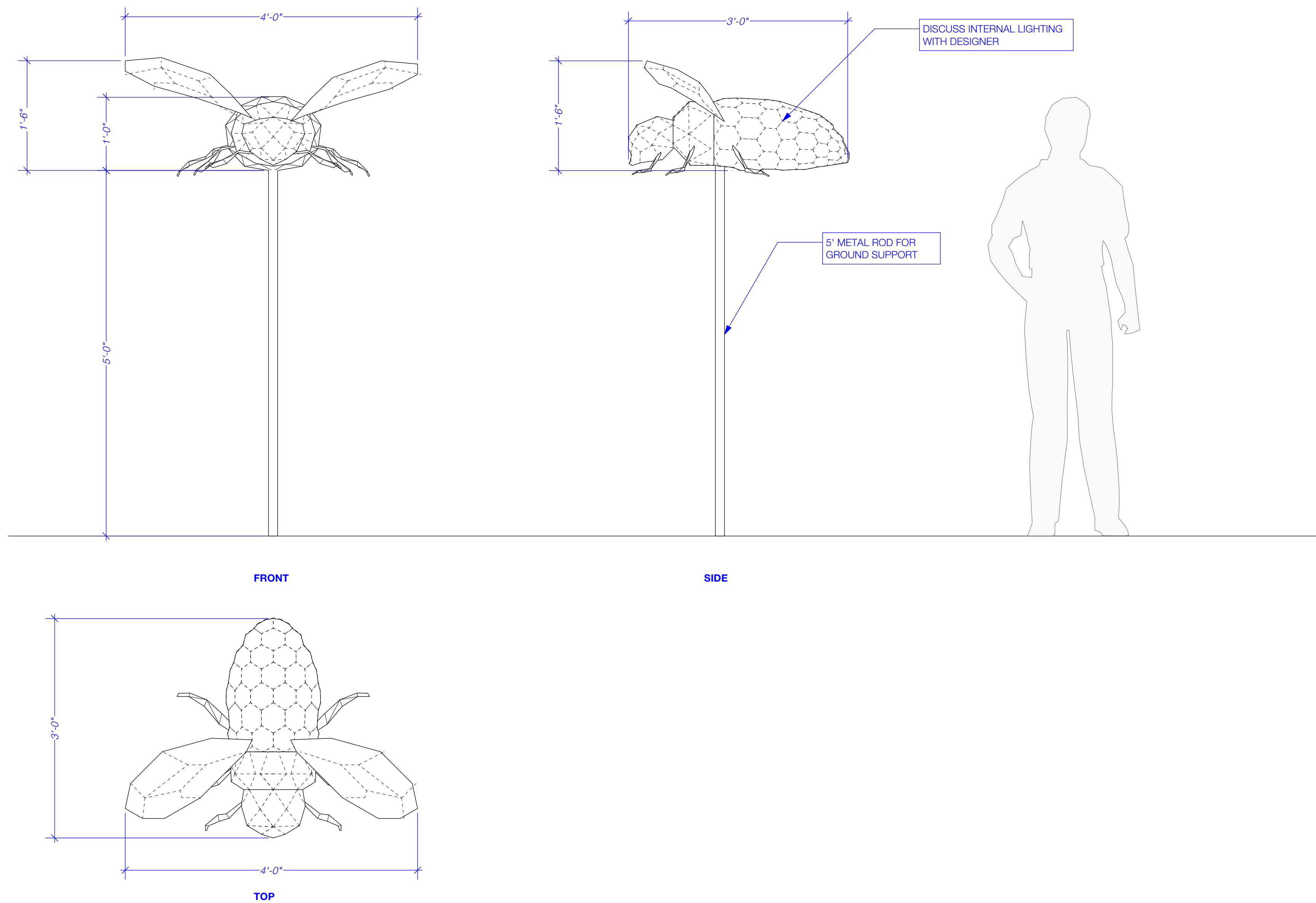


NIGHT TIME REFERENCE

2 WAY MIRROR REFERENCE.
-USE 2 WAY MIRROR. DISCUSS DETAILS W/ DESIGNERS.

NOTES:
-REFER TO 3D MODEL FOR CONTRUCTION GEOMETRY.
-NEED TO AD INTERNAL POINTS TO ATTACH LIGHTING INSTRUMENTS.
-MAKE 6 IN TOTAL.

BEEES



DAYTIME RENDERS FOR REFERENCE



BID / BUILD
BID

SUMMER FOR THE CITY

LINCOLN CENTER PLAZA - JRP

PRODUCTION TEAM

PRODUCER:
LINCOLN CENTER

DIRECTOR:

WRITTEN BY:

SCENIC DESIGNER:
CLINT RAMOS

COSTUME DESIGNER:

LIGHTING DESIGNER:

SOUND DESIGNER:

IMPORTANT DISCLAIMER:
The designer is responsible for the visual aspects of the production only, and the specification of the designer's designs relate solely to the appearance of the design and not to matters of safety. The designer agrees to make prompt correcting alterations to any specifications found to be incompatible with proper safety precautions.

SUMMER FOR THE CITY
THE BEES

DATE: DEC 21, 2023 VERSION: PRE-01

DRAWN BY:
VIVIENNE LIU
vivienneliusetdesign@gmail.com / 412-3786030

PLATE NO.
2

SCALE: AS NOTED

THE BEES
SCALE: 1"=1'-0"