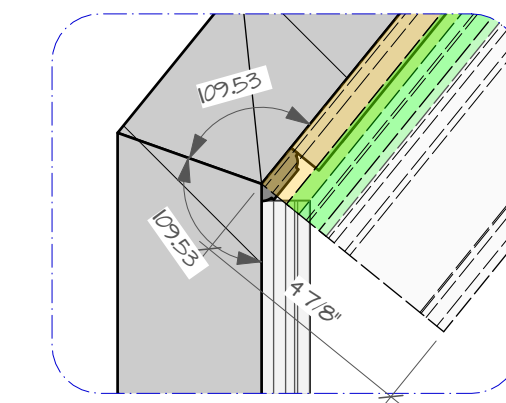
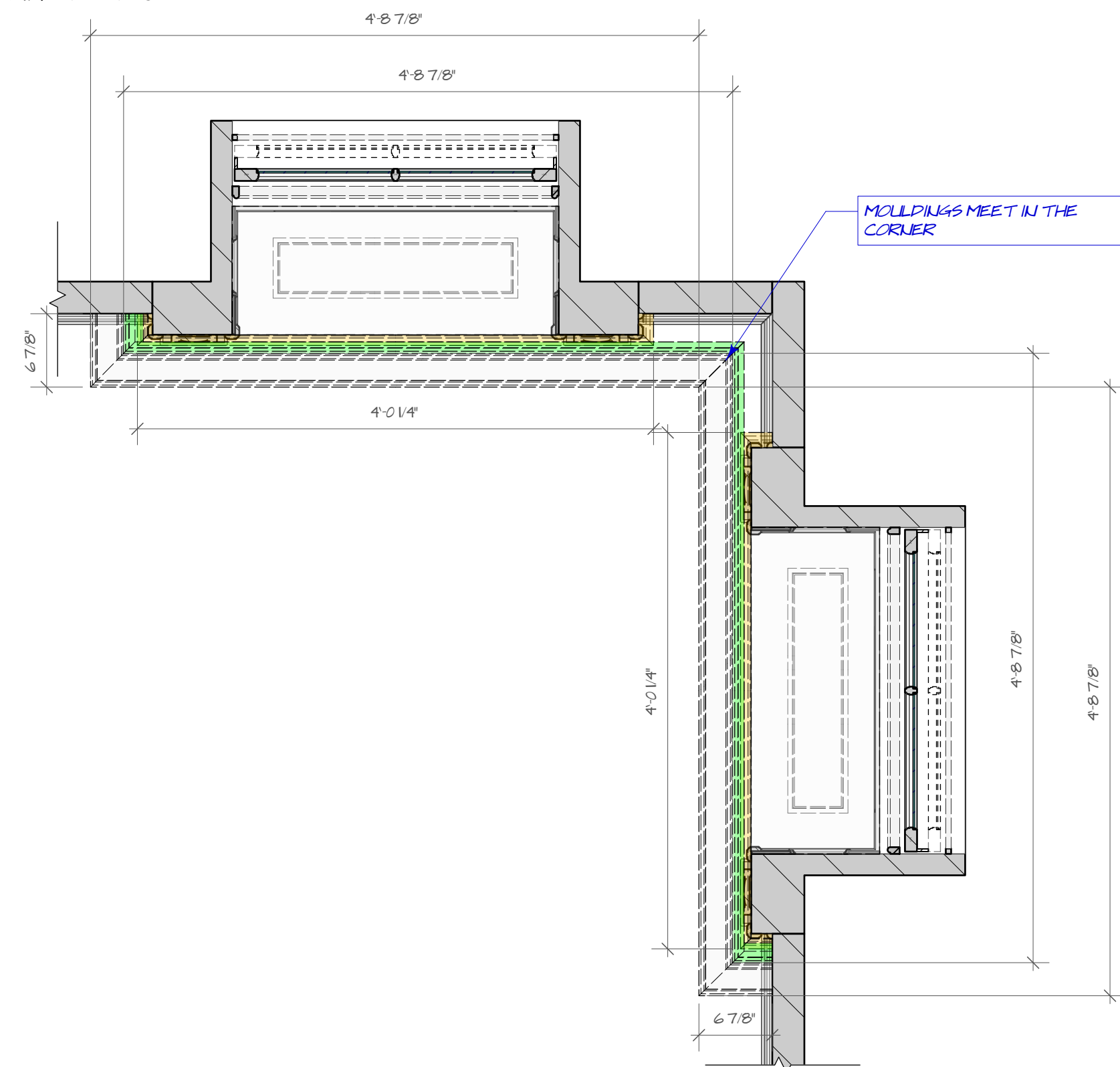


D1 WINDOW 6 DETAIL 1  
SCALE: 3" = 1'-0"



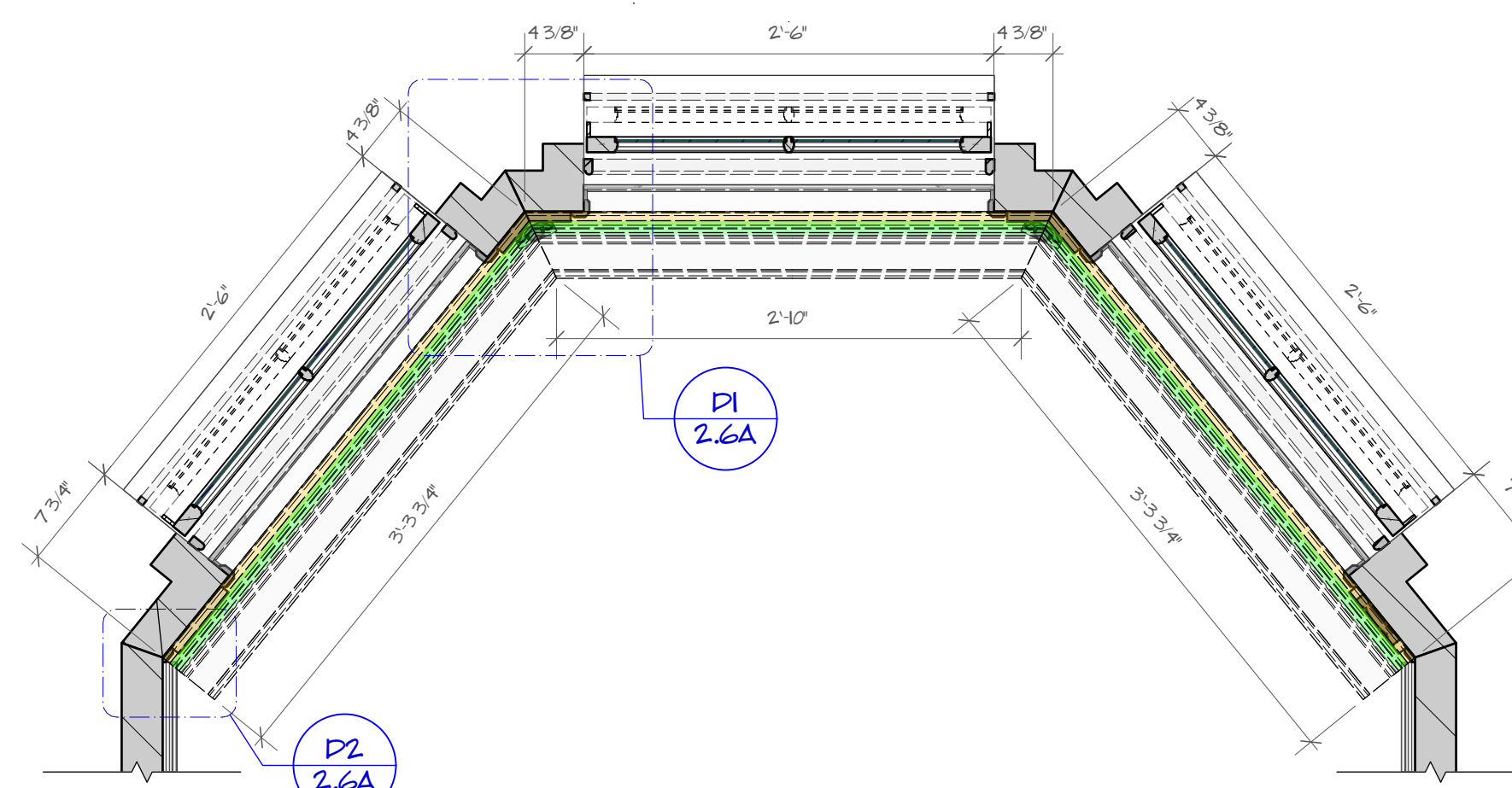
D2 WINDOW 6 DETAIL 2  
SCALE: 3" = 1'-0"

1 CORNER WINDOW ELEVATION  
SCALE: 1" = 1'-0"



2 CORNER WINDOW PLAN VIEW  
SCALE: 1" = 1'-0"

3 WINDOW 6 FRONT ELEVATION  
SCALE: 1" = 1'-0"



4 WINDOW 6 PLAN VIEW  
SCALE: 1" = 1'-0"

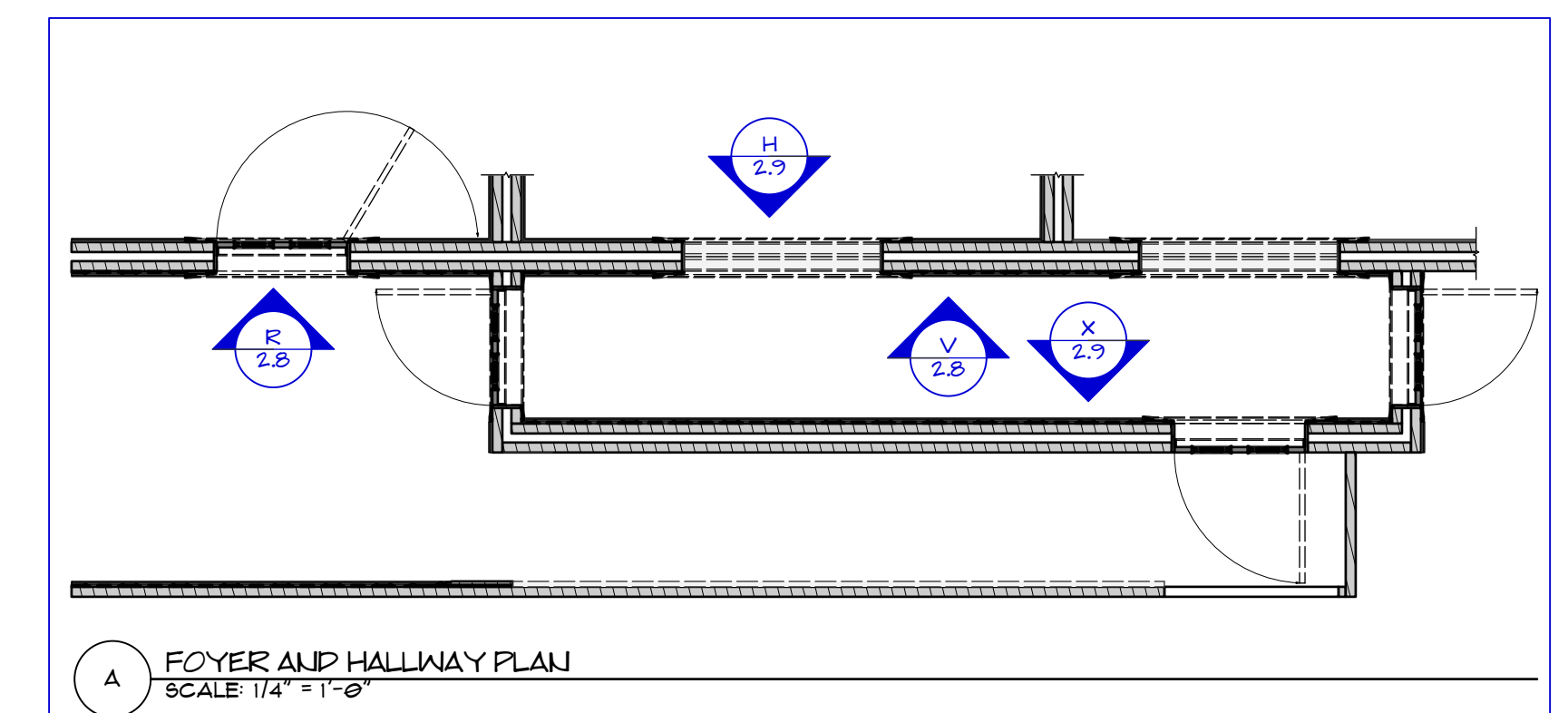
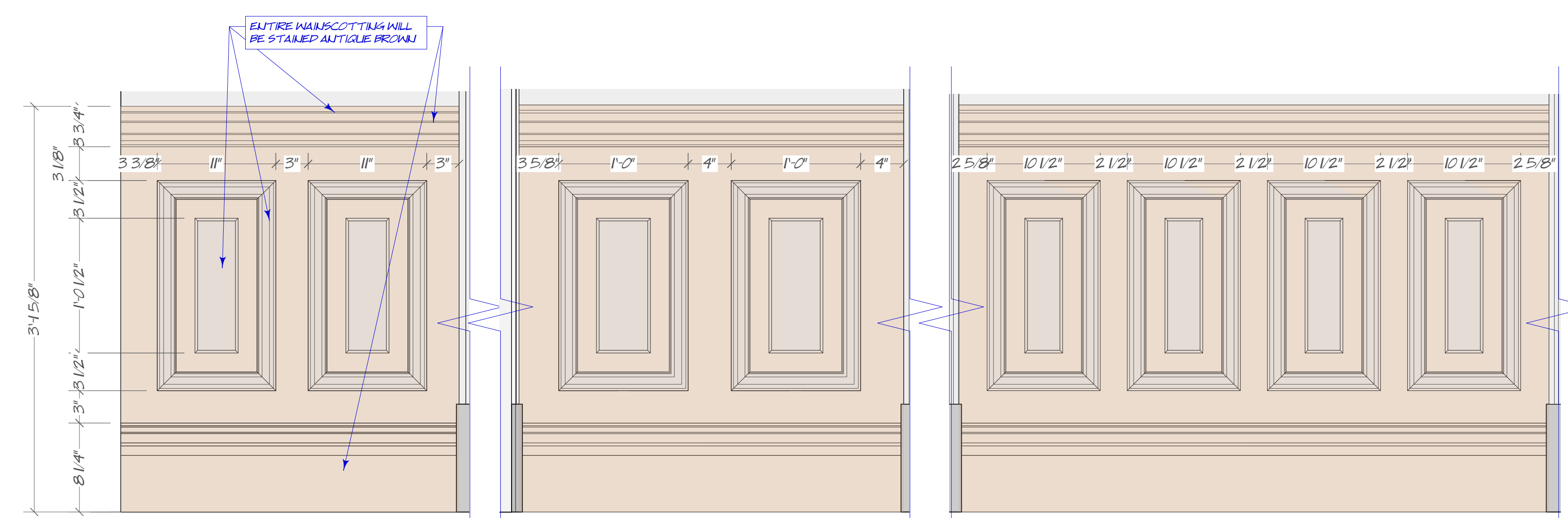
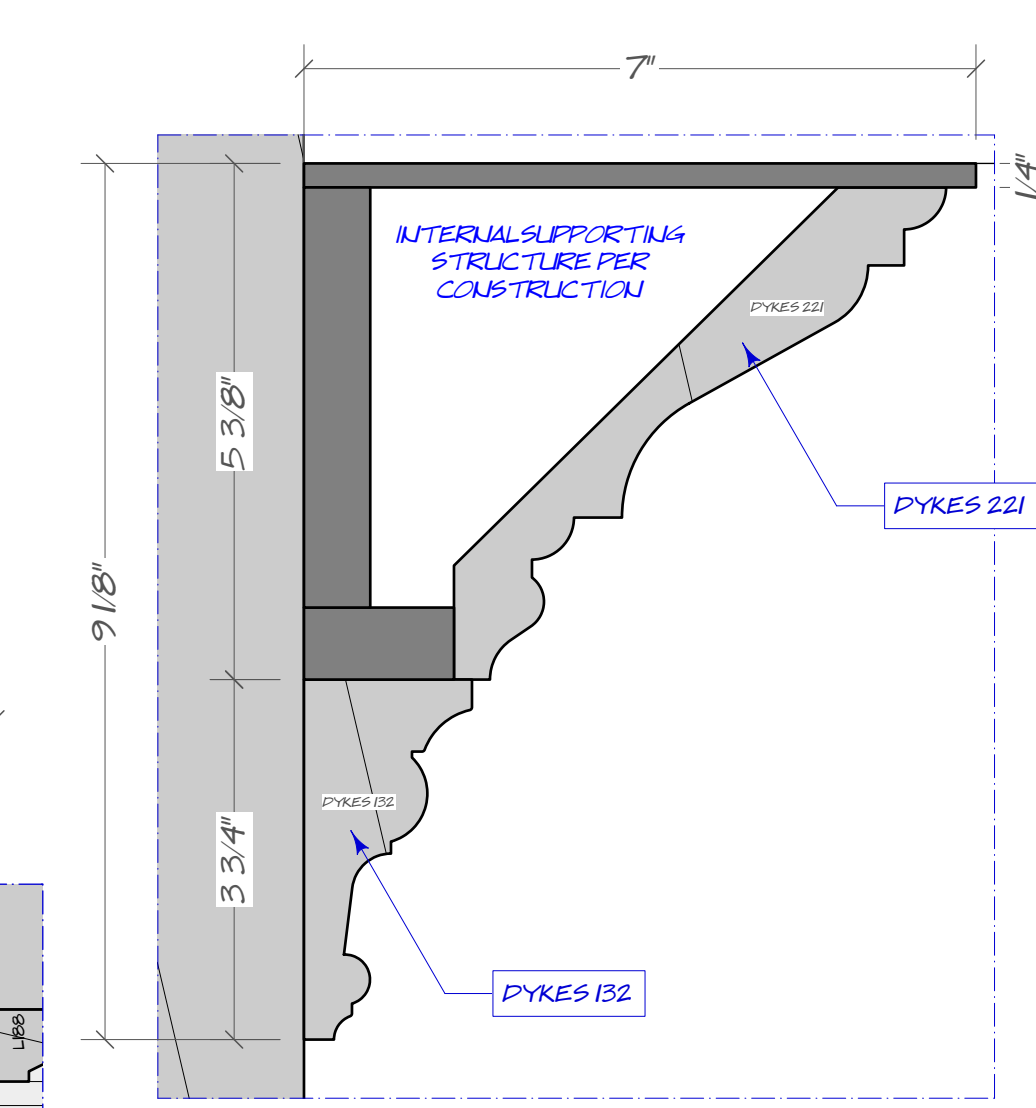
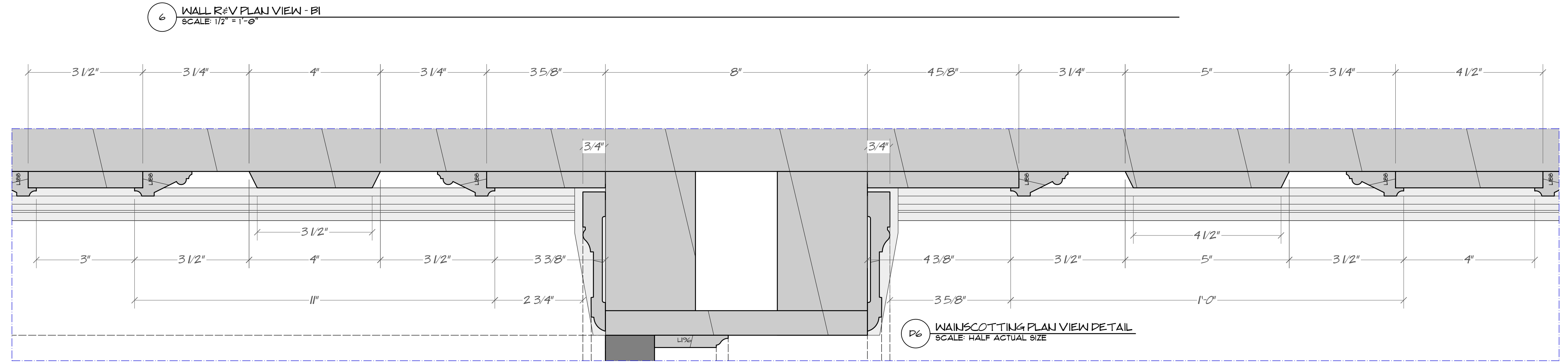
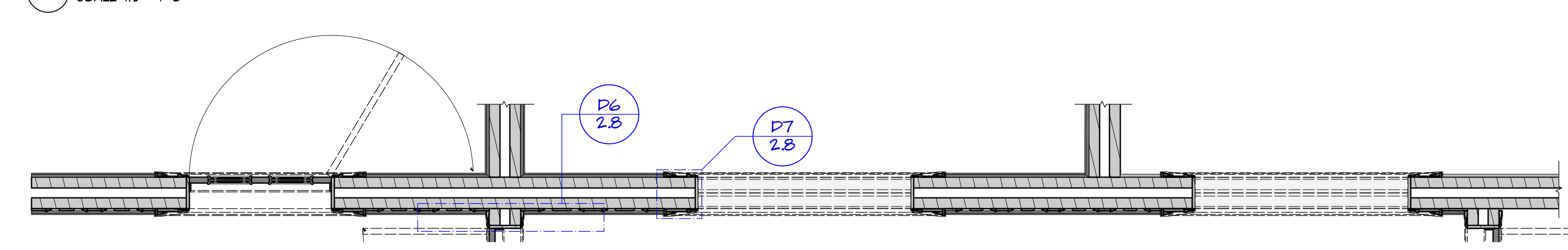
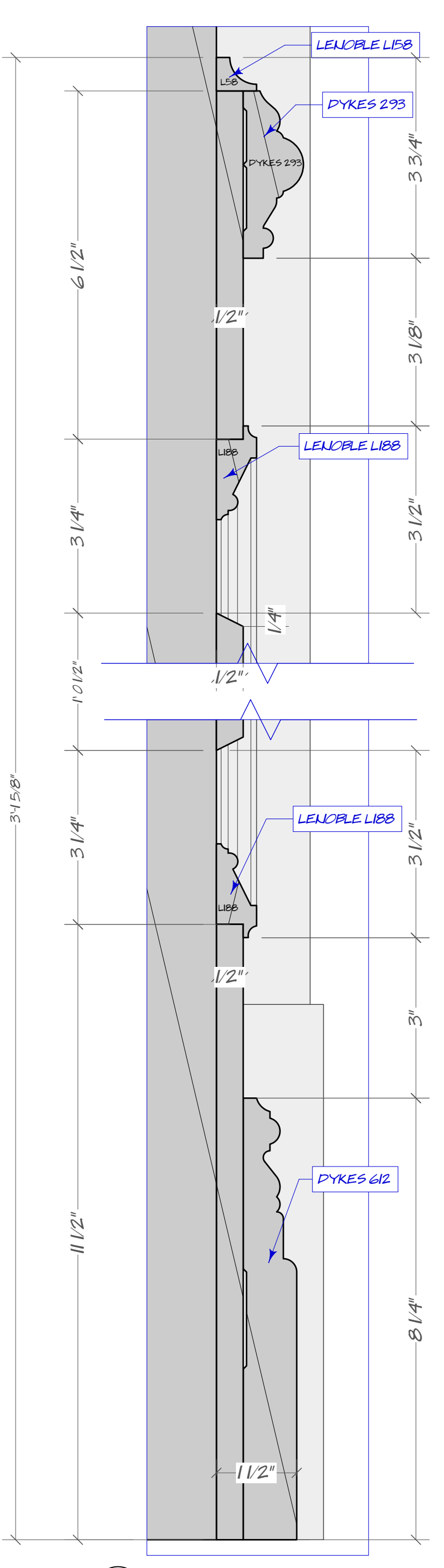
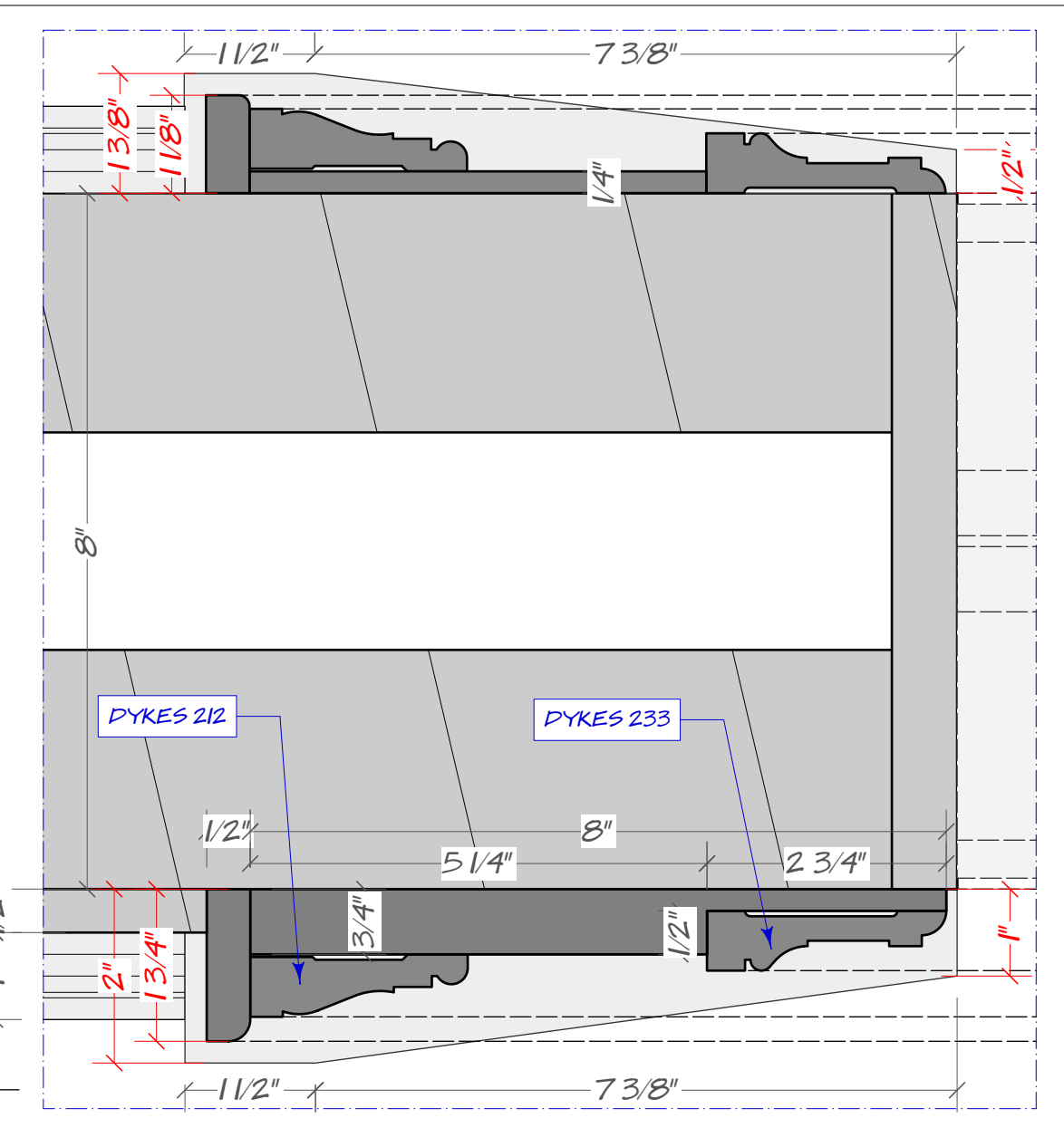
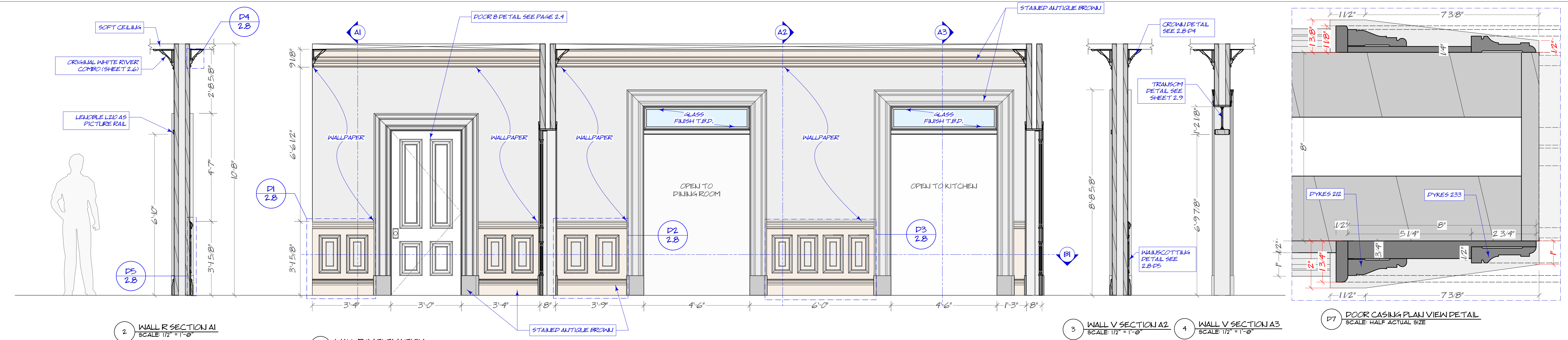
ALL WINDOWS NEED TO BE ABLE TO GIMBAL

REF ID	QUANTITY	LOCATION	STYLE	OPERABLE SIDE	MTY	MTY DATE	ROOM NAME
W01	4	REAR PORCH	FLORIAN HEAD	EXTERIOR	TRA	TRA	
W02	1	REAR PORCH	FLORIAN HEAD	EXTERIOR	TRA	TRA	
W03	4	REAR PORCH	FLORIAN HEAD	EXTERIOR	TRA	TRA	
W04	1	REAR PORCH	FLORIAN HEAD	EXTERIOR	TRA	TRA	
W05	2	REAR PORCH	FLORIAN HEAD	EXTERIOR	TRA	TRA	
W06	1	REAR PORCH	FLORIAN HEAD	EXTERIOR	TRA	TRA	
W07	4	REAR PORCH	FLORIAN HEAD	EXTERIOR	TRA	TRA	
W08	1	REAR PORCH	FLORIAN HEAD	EXTERIOR	TRA	TRA	
W09	4	REAR PORCH	FLORIAN HEAD	EXTERIOR	TRA	TRA	
W10	1	REAR PORCH	FLORIAN HEAD	EXTERIOR	TRA	TRA	

RELEASED

DATE: 23/4/11  
TIME: 2:39:43 PM



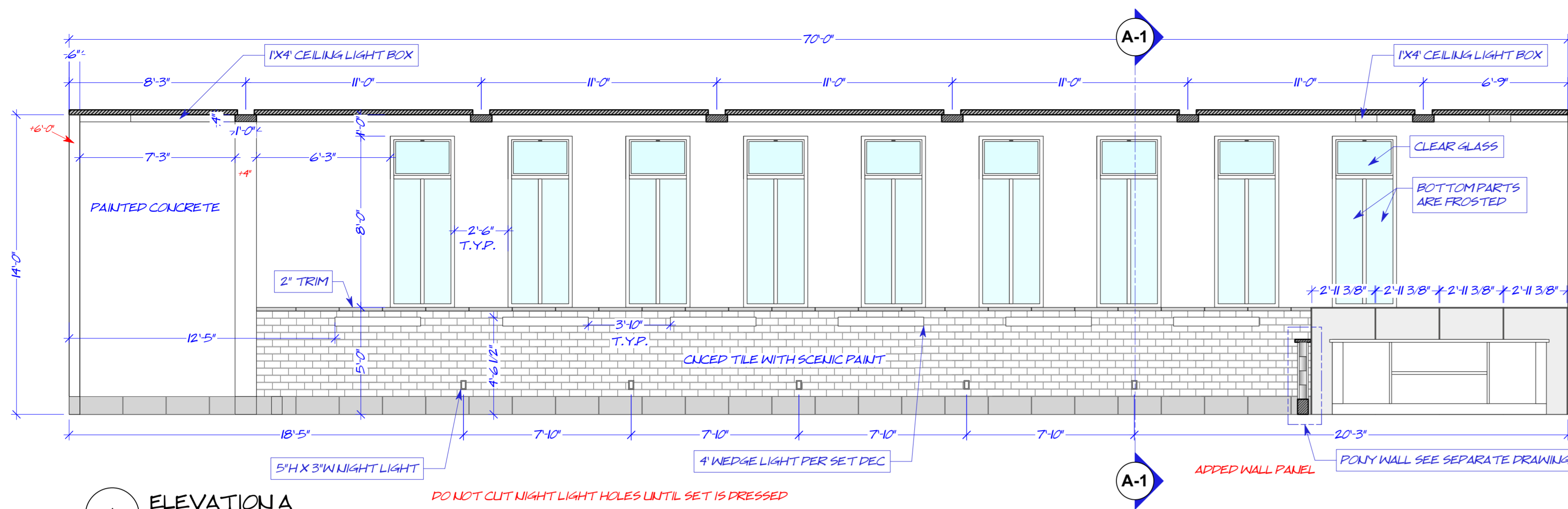


2 WALL R SECTION A1 SCALE 1/2" = 1'-0"  
 1 WALL R&V ELEVATION SCALE 1/2" = 1'-0"  
 3 WALL V SECTION A2 SCALE 1/2" = 1'-0"  
 4 WALL V SECTION A3 SCALE 1/2" = 1'-0"  
 D7 DOOR CASING PLAN VIEW DETAIL SCALE: HALF ACTUAL SIZE  
 6 WALL R&V PLAN VIEW - B1 SCALE 1/2" = 1'-0"  
 D4 FOYER & HALLWAY CROWN DETAIL SCALE: HALF ACTUAL SIZE  
 P5 WAINSCOTTING SECTION DETAIL 2 SCALE: HALF ACTUAL SIZE  
 D1 WAINSCOTTING DETAIL 1 SCALE 1/2" = 1'-0"  
 P2 WAINSCOTTING DETAIL 2 SCALE 1/2" = 1'-0"  
 P3 WAINSCOTTING DETAIL 3 SCALE 1/2" = 1'-0"  
 A FOYER AND HALLWAY PLAN SCALE 1/4" = 1'-0"

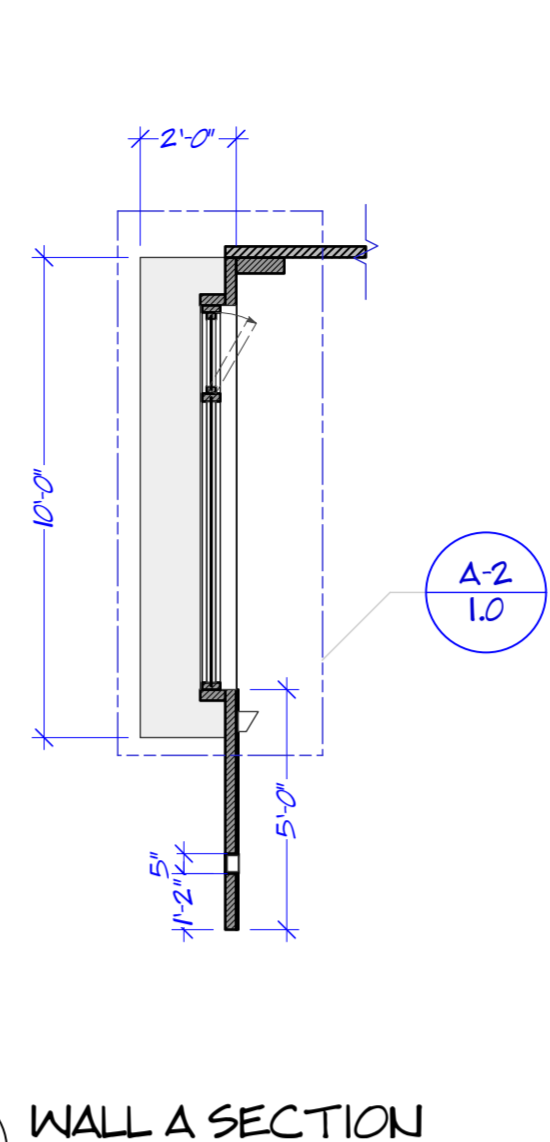
**RELEASED**  
 DATE: 23/4/26  
 TIME: 4:57:00 PM

PKG. NO. **2.8**  
 SCALE: AS NOTED  
 DATE: 4/26/2023  
 SET NAME: INT. BROWNSTONE  
 PKG NAME: PARLOR LEVEL - FOYER & HALLWAY WAINSCOTTING (WALL R, V)  
 LOCATION: STAGE - SUSTAINABLE STUDIOS  
 SET NO. 100/101  
 ERMORT  
 PRODUCTION DESIGNER: MATTHEW MUNN  
 ART DIRECTORS: SIA BALABANOVA & CLAY BRONN  
 DRAWN BY: VIVIEN LILU  
 412.378.6030  
**Winston**  
 SEASOUI

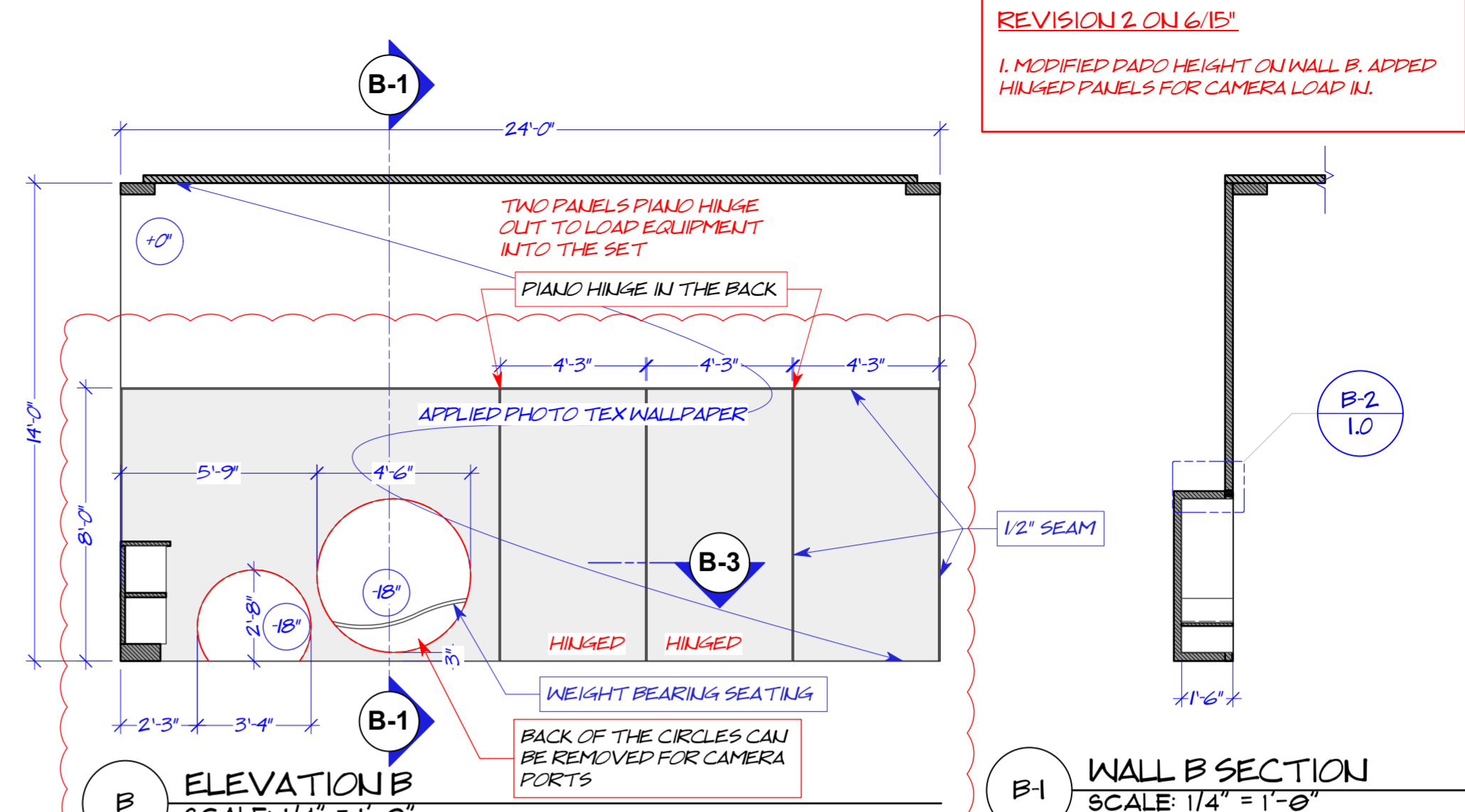




**A ELEVATION A**  
SCALE: 1/4" = 1'-0"



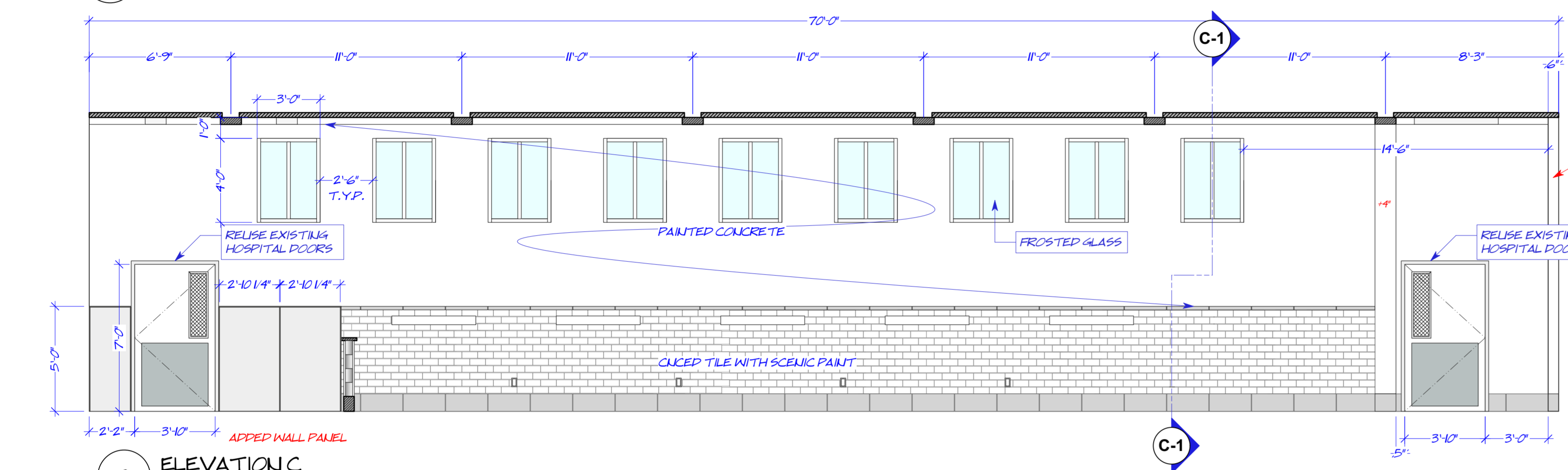
**A1 WALL A SECTION**  
SCALE: 1/4" = 1'-0"



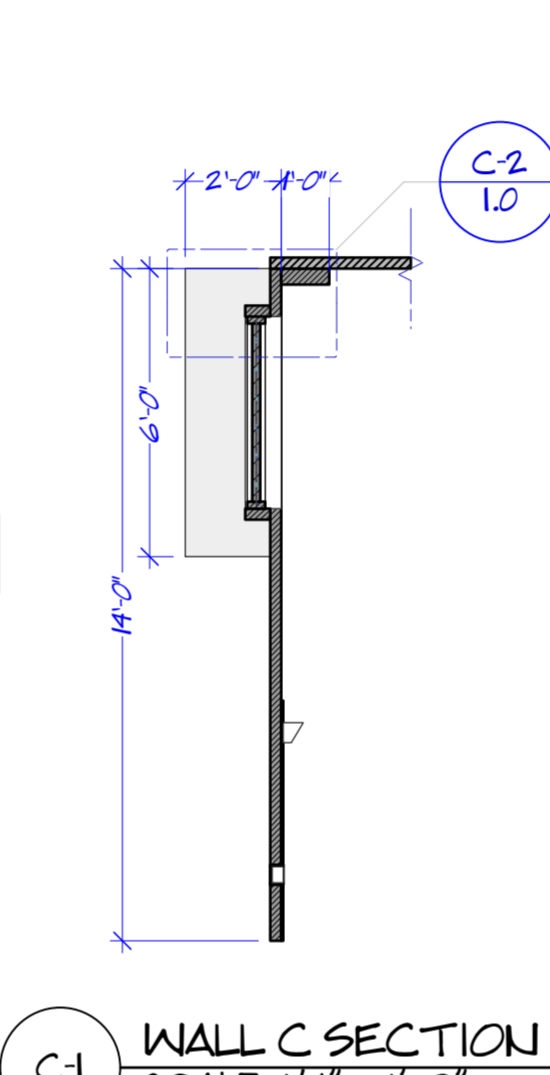
**B ELEVATION B**  
SCALE: 1/4" = 1'-0"

REVISION 2 ON 6/15/15  
1. MODIFIED PIANO HEIGHT ON WALL B. ADDED HINGED PANELS FOR CAMERA LOAD IN.

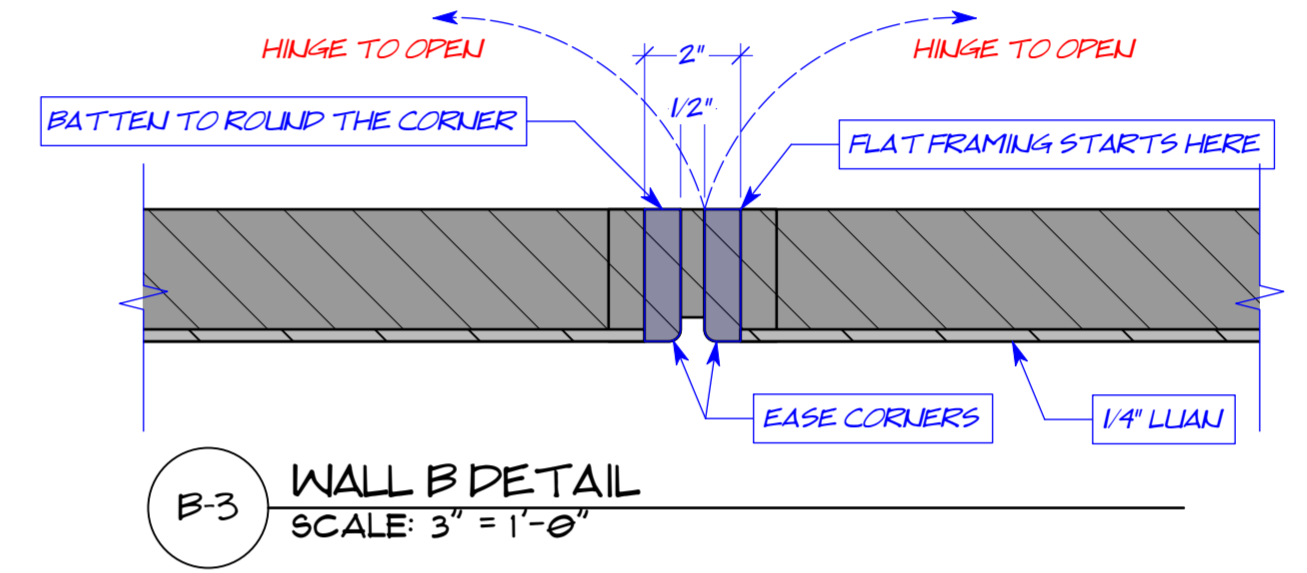
**B1 WALL B SECTION**  
SCALE: 1/4" = 1'-0"



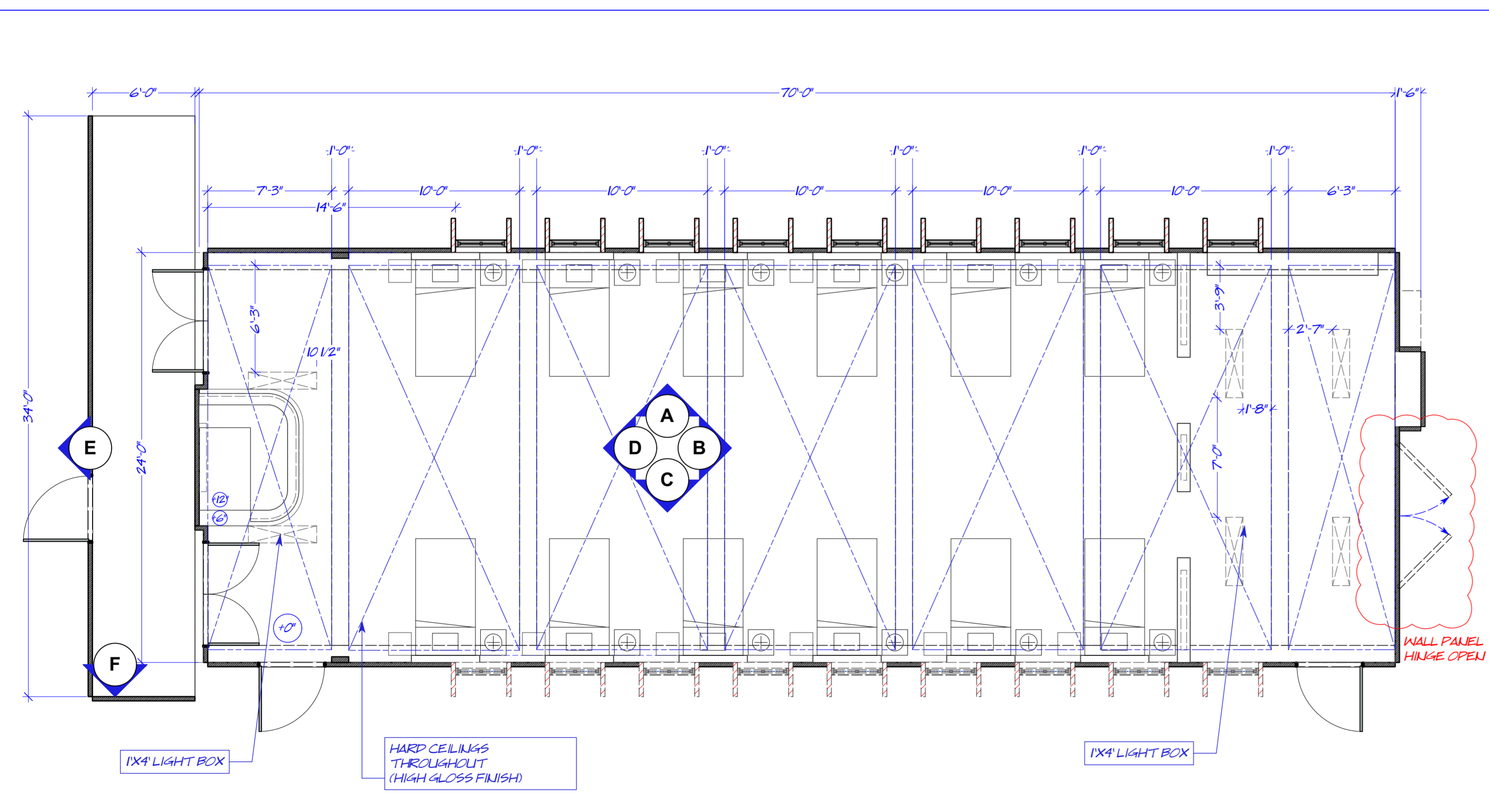
**C ELEVATION C**  
SCALE: 1/4" = 1'-0"



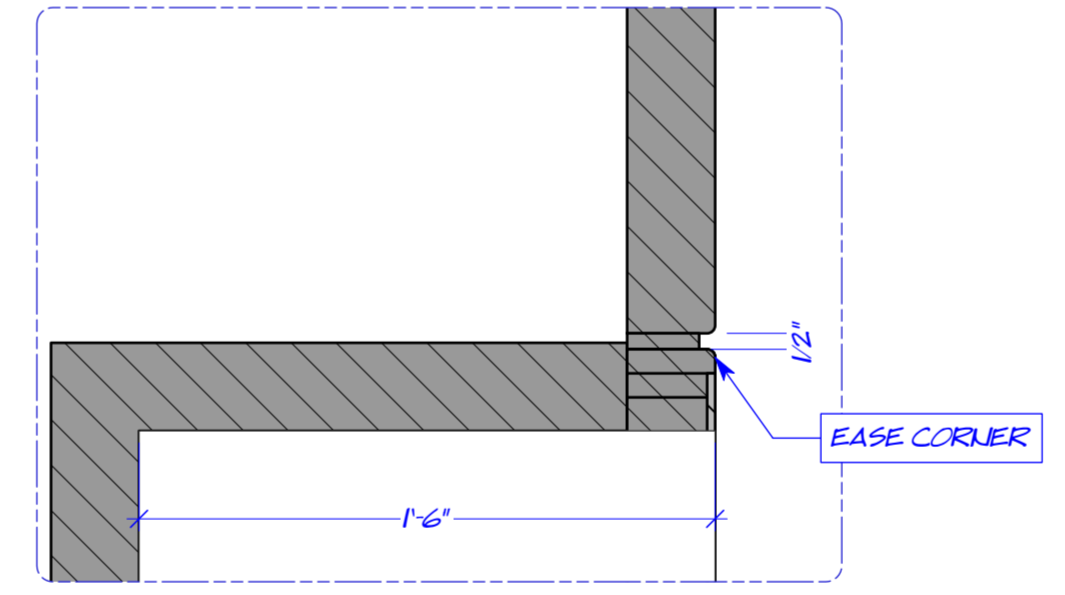
**C1 WALL C SECTION**  
SCALE: 1/4" = 1'-0"



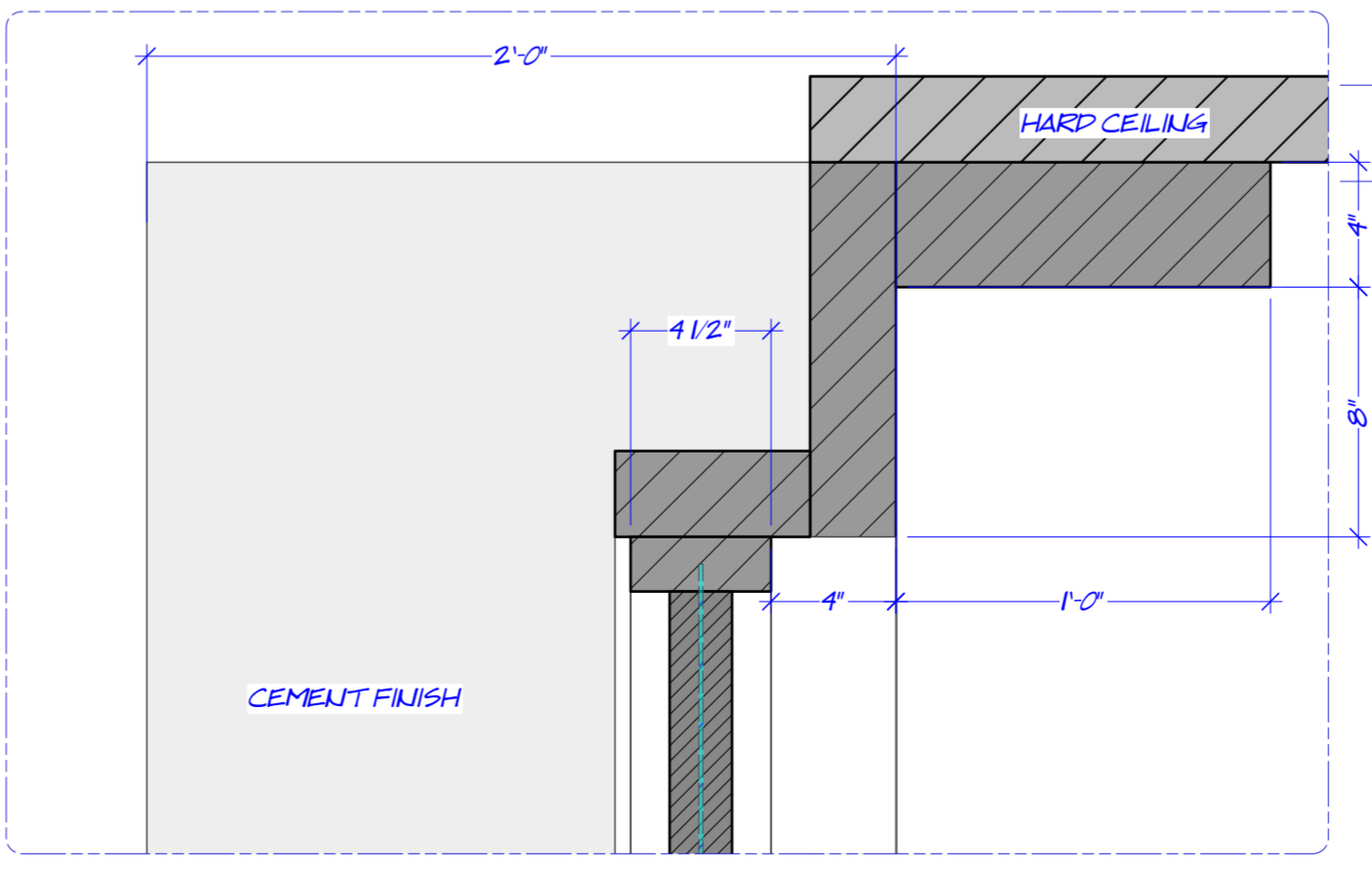
**B-3 WALL B DETAIL**  
SCALE: 3" = 1'-0"



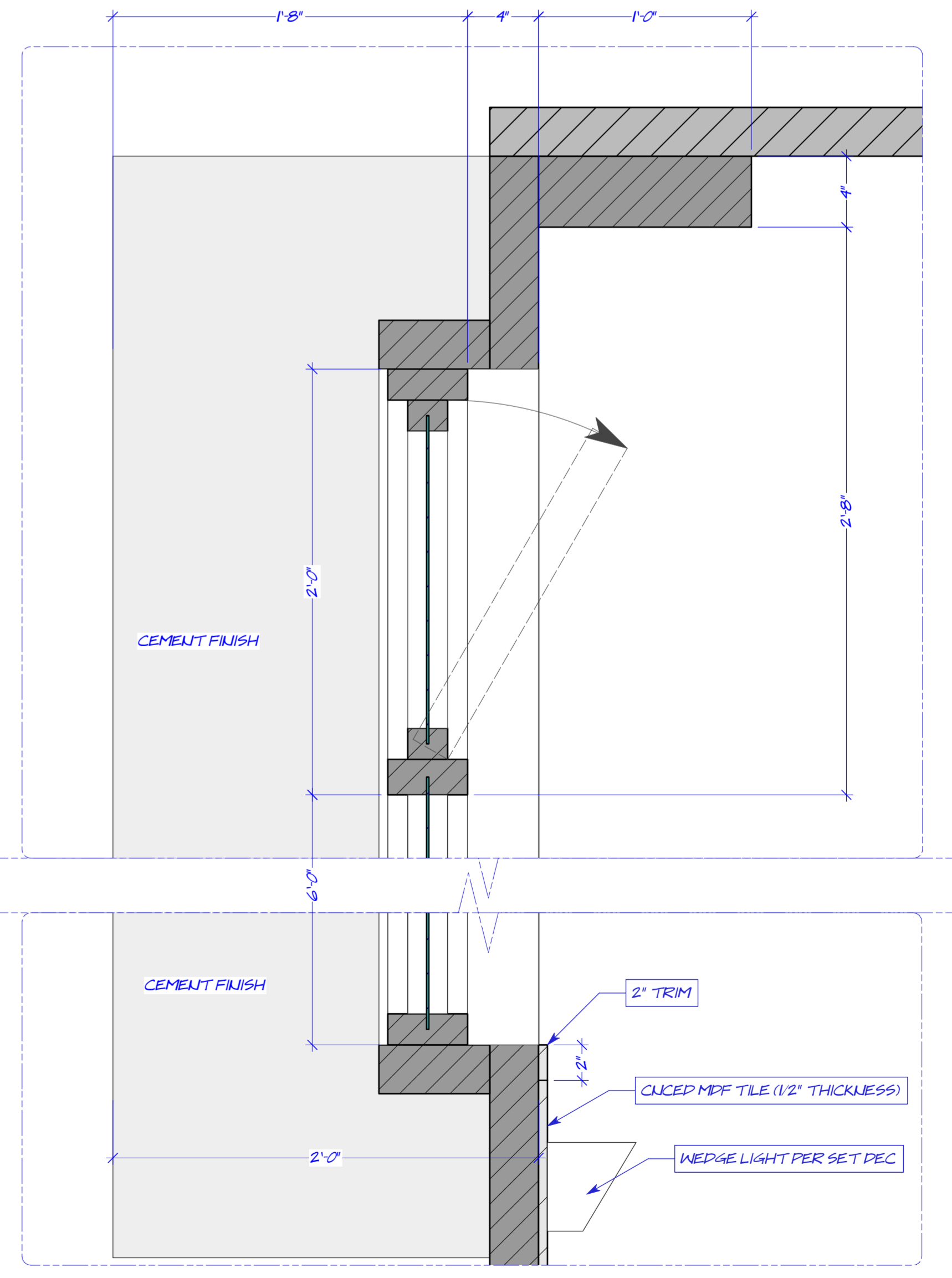
**I PLAN VIEW & RCP**  
SCALE: 3/16" = 1'-0"



**B-2 WALL B SECTION DETAIL**  
SCALE: 2" = 1'-0"



**C-2 WALL C SECTION DETAIL**  
SCALE: 2" = 1'-0"

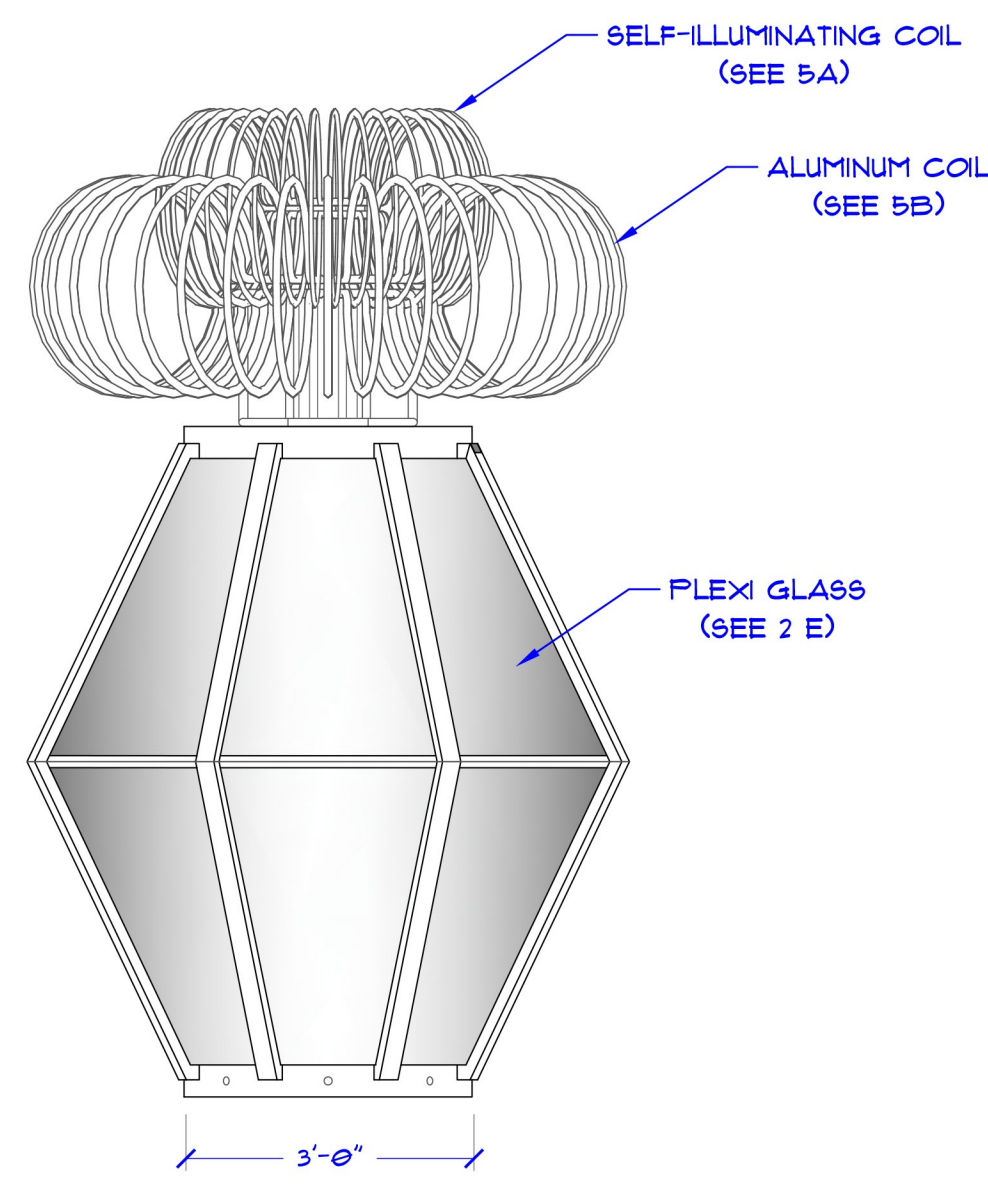


**A-2 WALL A SECTION DETAIL**  
SCALE: 2" = 1'-0"

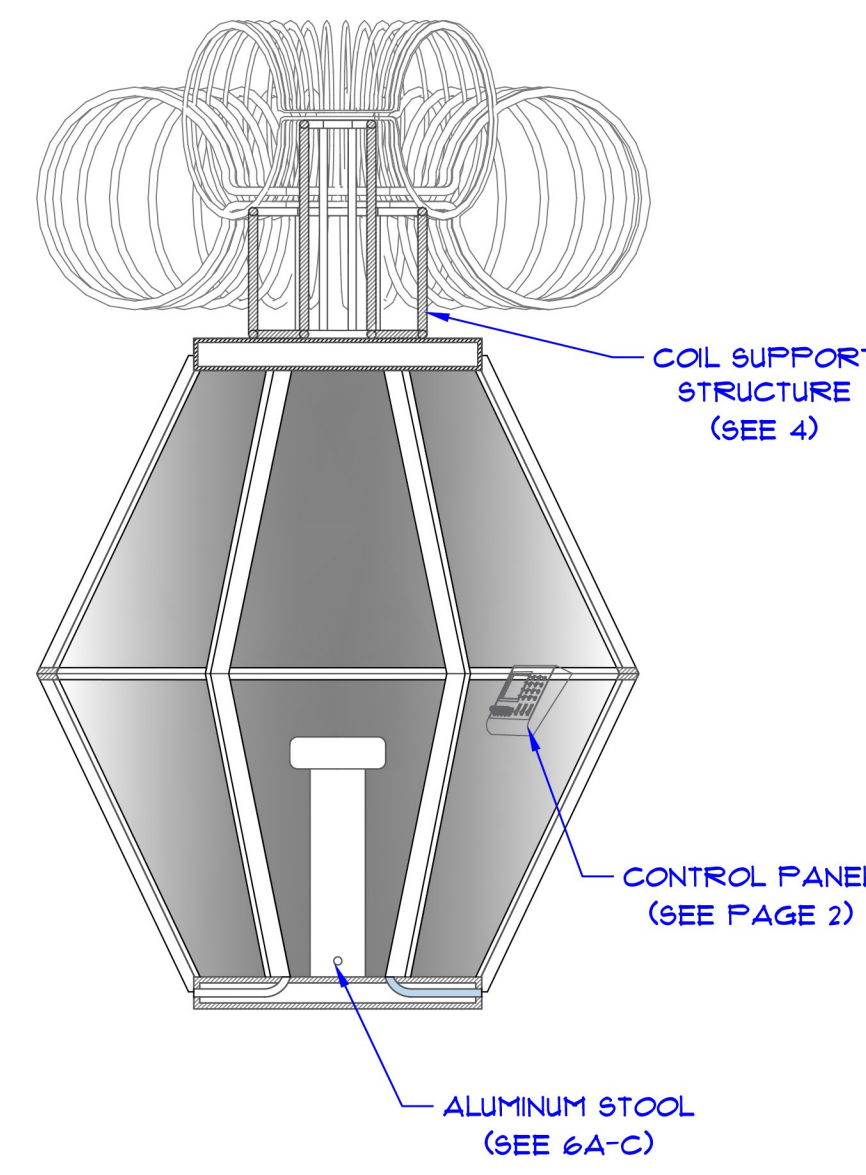
**REVISED**

Date: 23/6/15  
Time: 3:13:10 PM

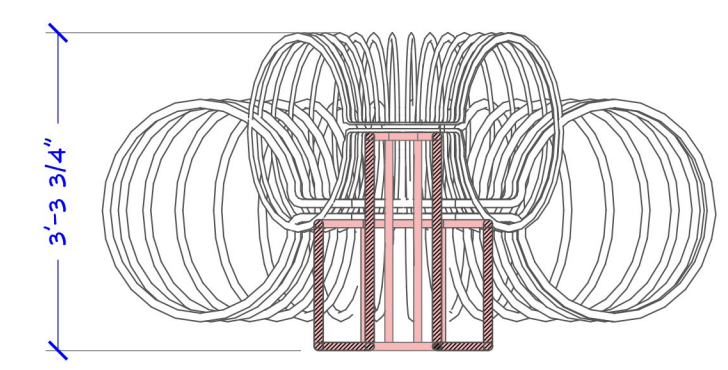




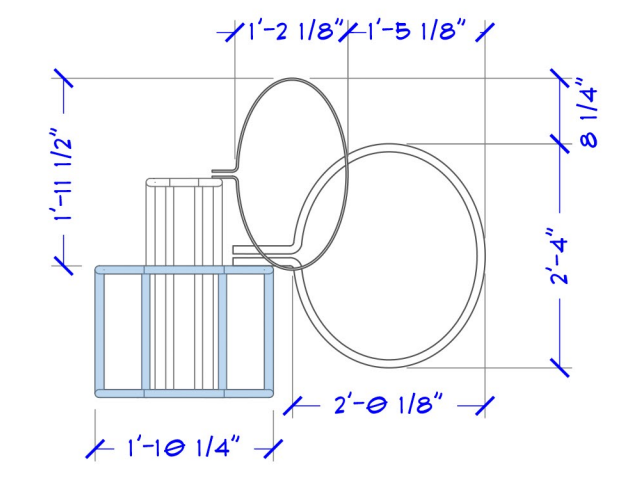
1 ELEVATION  
SCALE: 1/2" = 1'-0"



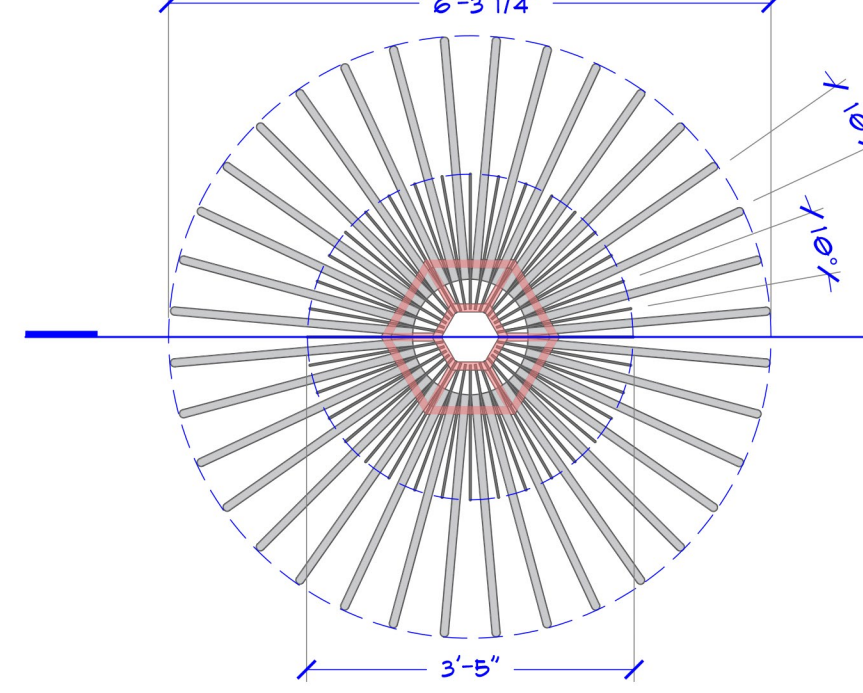
1A SECTION A  
SCALE: 1/2" = 1'-0"



3 COIL HEAD SECTION 1-F  
SCALE: 1/2" = 1'-0"



3A COIL SUPPORT STRUCTURE  
SCALE: 1/2" = 1'-0"



3B COIL HEAD PLAN VIEW  
SCALE: 1/2" = 1'-0"

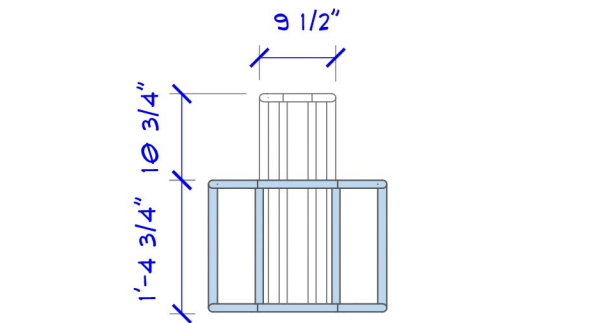
**COIL PIPE**  
MCMASTER CAR 4463K23 & 4463K126

Flexible Rubber Foam Pipe Insulation  
Soft and easy to install, this insulation restricts absorption of water, air, and gas. It is often used on cold and hot refrigeration lines. Seal with contact adhesive (sold separately). To use outdoors, coat in acrylic paint.

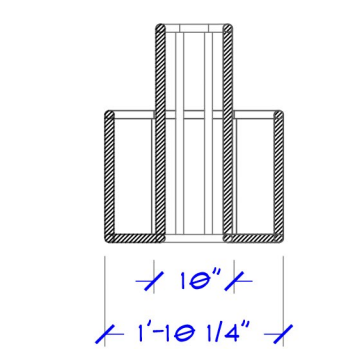
Slit tubes have an adhesive strip closure.

Unslit Tubes

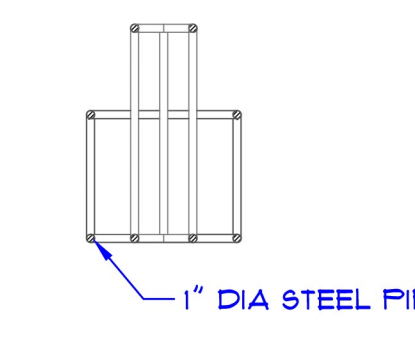
Unslit Tube	ID Size	For Pipe Tube Size	For Copper Tube Size	Lg. ft.	Flexibility R Value	Each
	1/4"			6	Flexible 1.5	4463K23 53.18
	3/8"	1/8"	3/8"	6	Flexible 1.5	4463K124 3.09
	1/2"	1/4"	3/8"	6	Flexible 1.5	4463K122 3.31
	5/8"	3/8"	1/2"	6	Flexible 1.5	4463K123 3.77
	3/4"	3/8"	1/2"	95	Flexible	
	5/8"	3/8"	1/2"	125	Flexible 1.5	4463K111 79.90
	3/4"			65	Flexible	4463K124 4.03
	3/4"			110	Flexible 1.5	4463K112 74.14
	7/8"	1/2"	3/4"	6	Flexible 1.5	4463K125 4.21
	7/8"	1/2"	3/4"	75	Flexible	
	7/8"	1/2"	3/4"	95	Flexible 1.5	4463K113 69.86
	1 1/8"	3/4"	1"	6	Flexible 1.5	4463K126 4.80



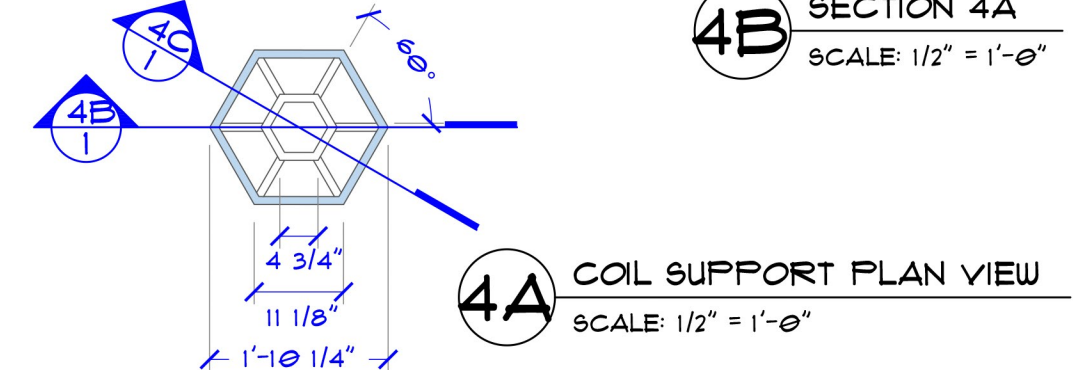
4 COIL SUPPORT ELEVATION  
SCALE: 1/2" = 1'-0"



4B SECTION 4A  
SCALE: 1/2" = 1'-0"



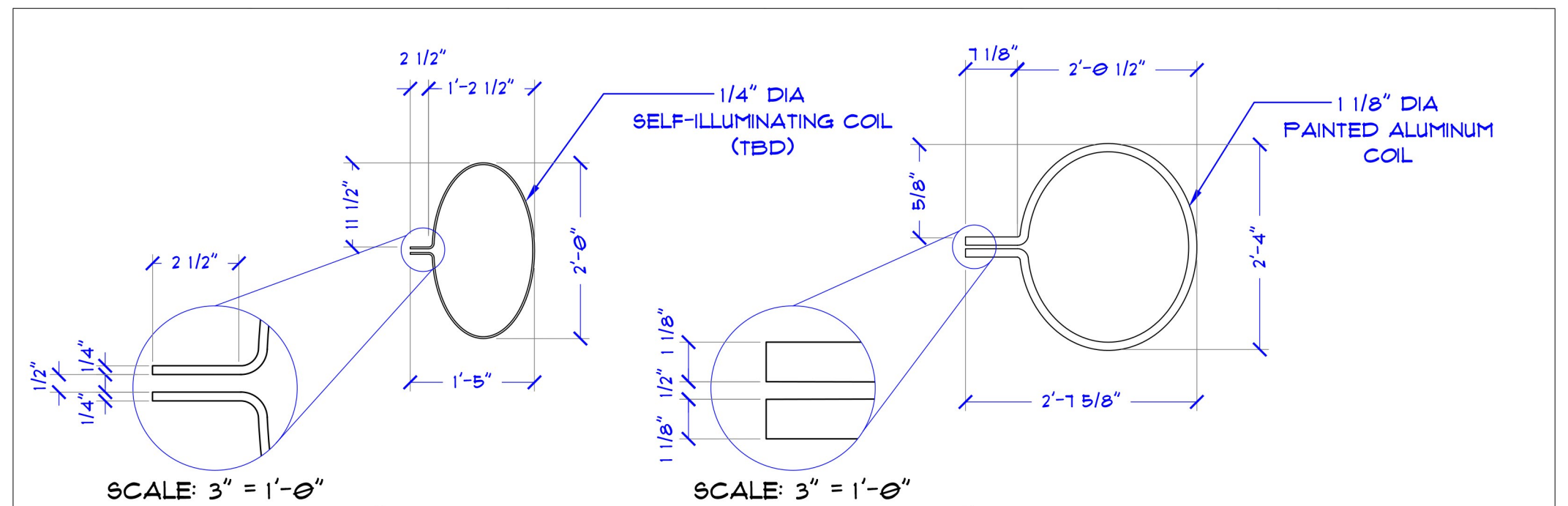
4C SECTION G2  
SCALE: 1/2" = 1'-0"



4A COIL SUPPORT PLAN VIEW  
SCALE: 1/2" = 1'-0"

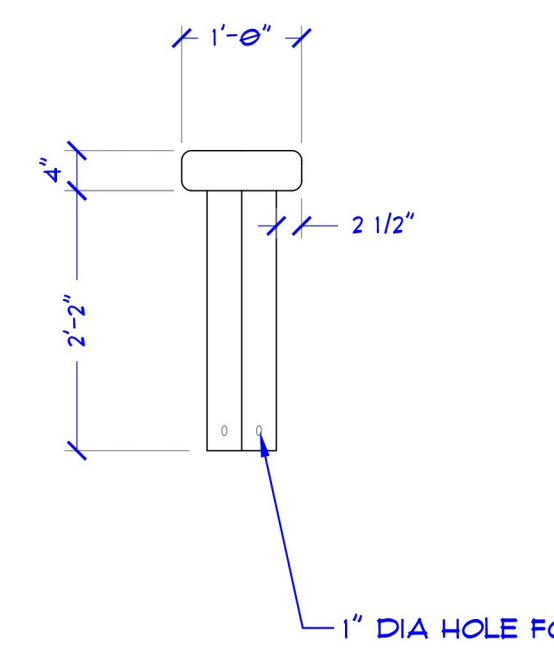
NOTES:

- COILS ARE DIRECTLY ATTACHED TO THE SUPPORT BASE
- ILLUMINATING COIL MATERIAL TBD
- COILS AND SUPPORT BASE BOTH PAINTED METALLIC SILVER (PAINT SPEC TBD)

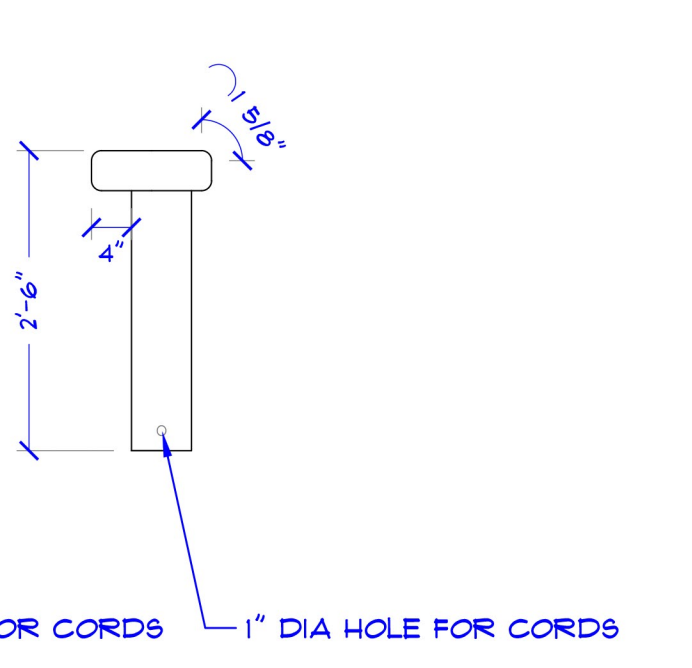


5A COIL PART 1  
SCALE: 1" = 1'-0"

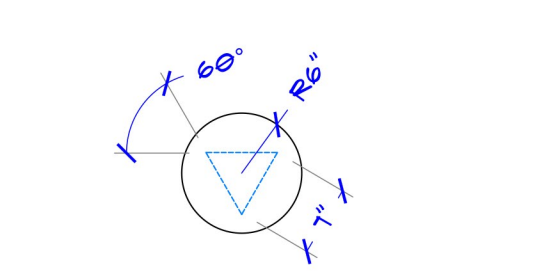
5B COIL PART 2  
SCALE: 1" = 1'-0"



6A STOOL ELEVATION 1  
SCALE: 1" = 1'-0"



6B STOOL ELEVATION 2  
SCALE: 1" = 1'-0"



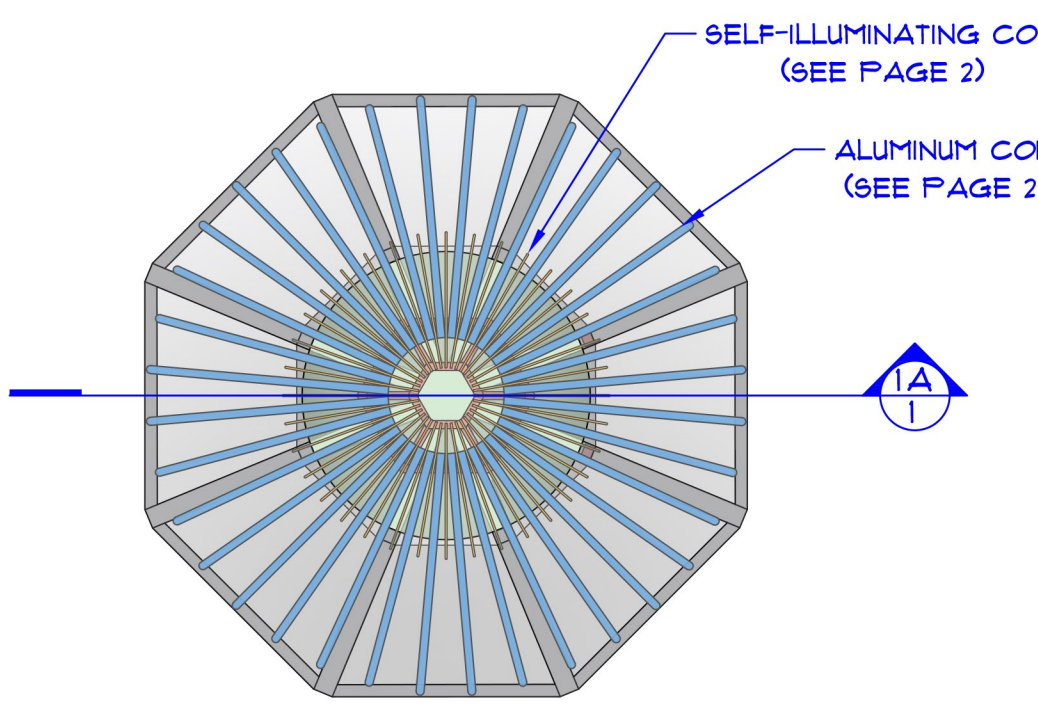
6C STOOL ELEVATION  
SCALE: 1" = 1'-0"

NOTES:

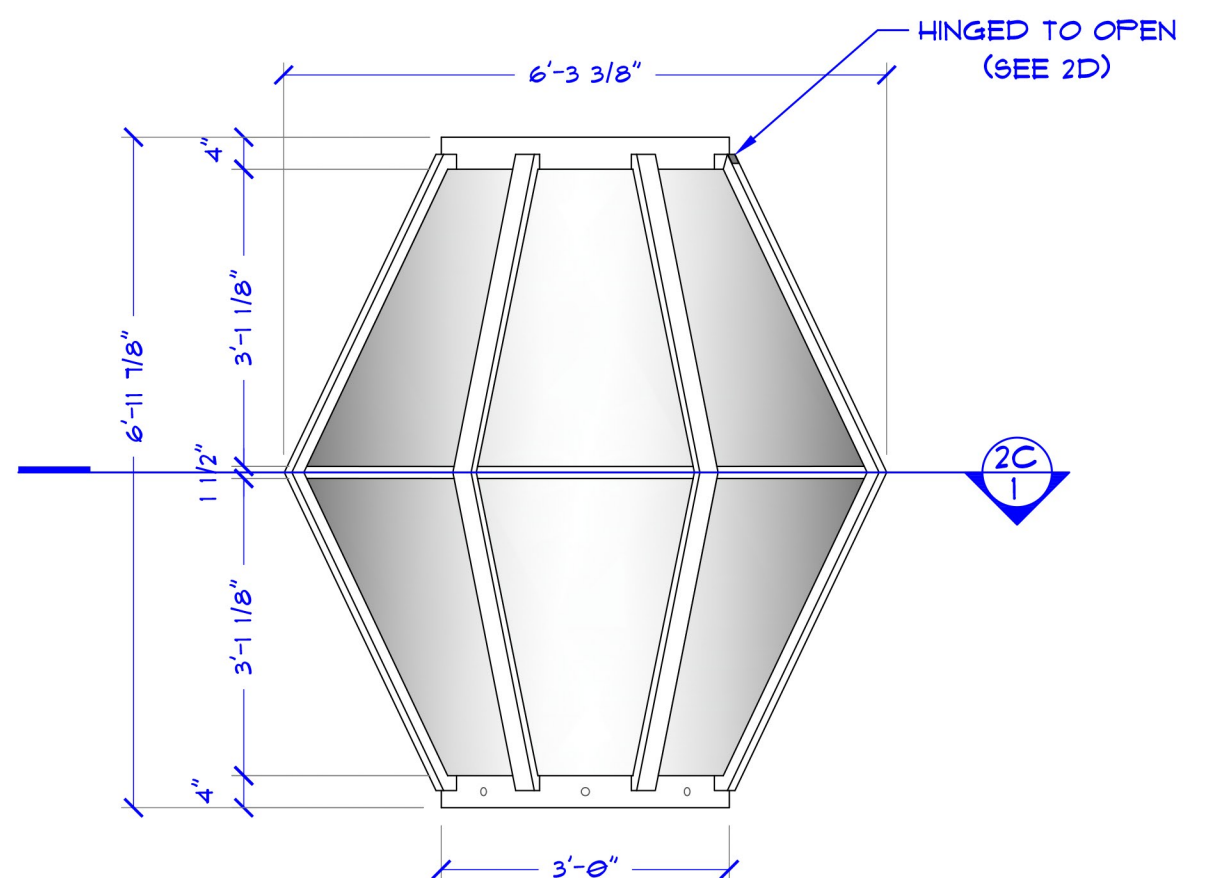
- STOOL IS MADE WITH PLYWOOD AND COVERED WITH METALLIC SILVER PAINT
- PAINT SPEC TBD
- STOOL DIRECTLY ATTACHED TO THE BASE

NOTES:

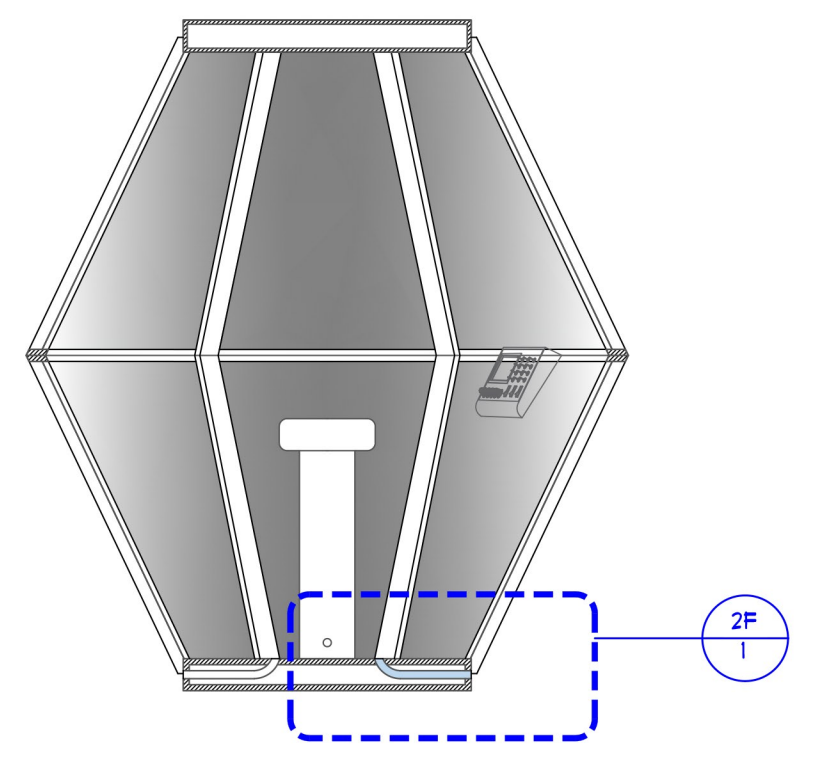
- ALL SIDES ARE CLEAR PLEXI GLASS
- FRAMING ARE PAINTED BRUSHED ALUMINUM (PAINT SPEC TBD)
- CONTROL PANEL SEE SEPARATE PAGE 2
- DOOR OPEN CONTROLLED REMOTELY
- NEED EXTRA CORDS (BOTH SELF-ILLUMINATING AND PAINTED ONES) FOR SET DRESSING
- PLEXI GLASS ONLY ON THE SIDES. NO GLASS ON TOP OR BOTTOM



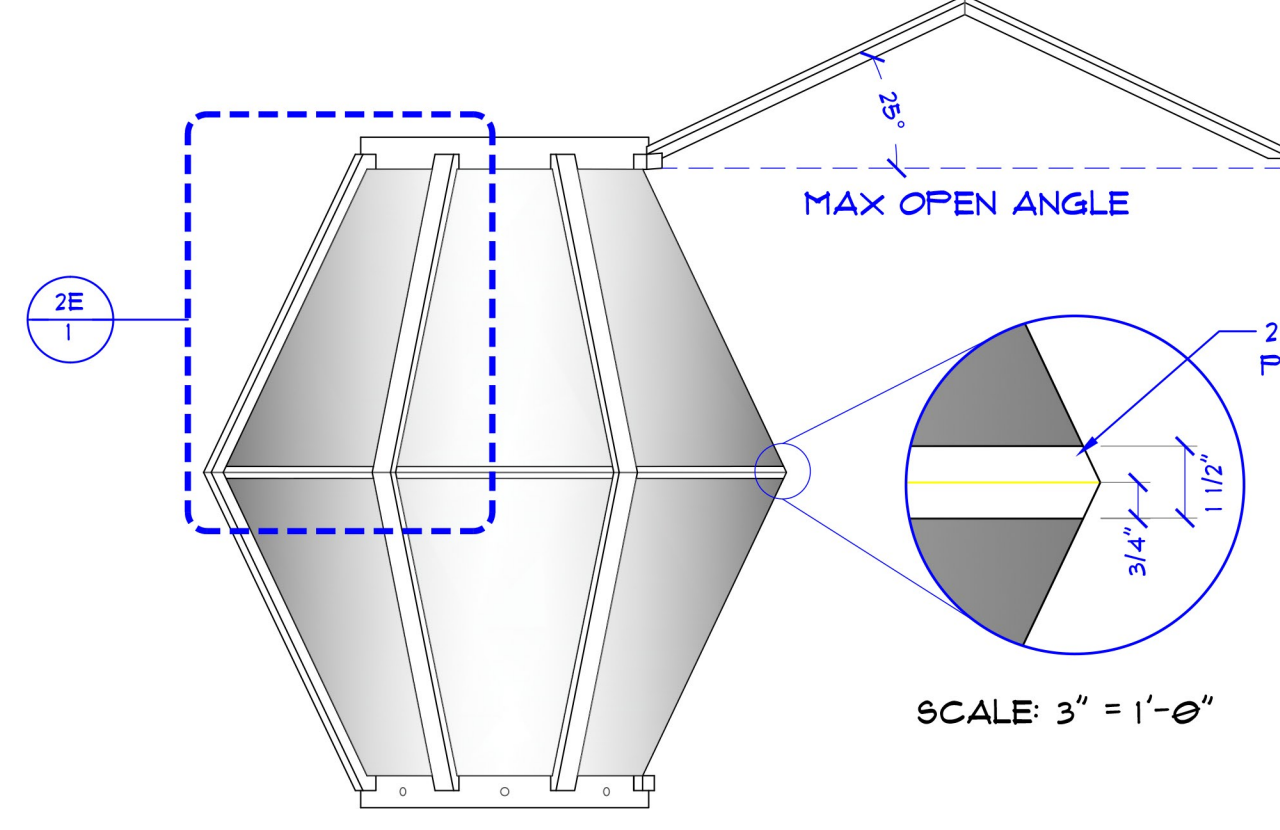
1B PLAN VIEW  
SCALE: 1/2" = 1'-0"



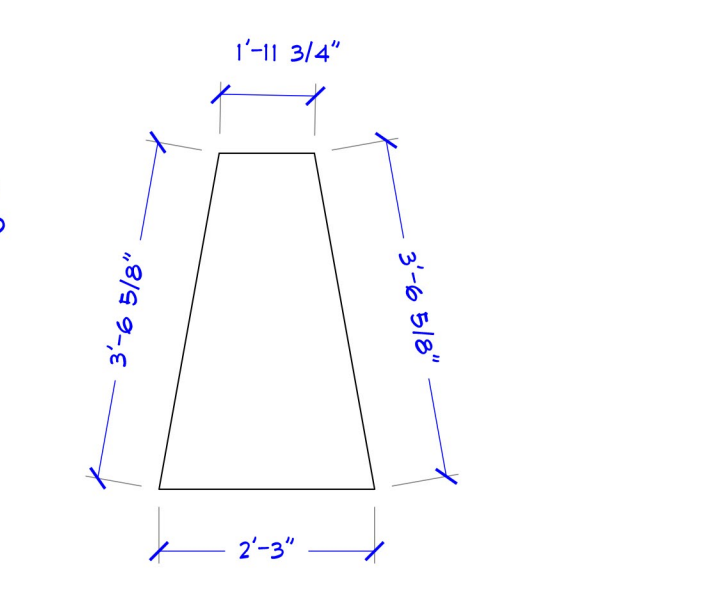
2 BODY ELEVATION  
SCALE: 1/2" = 1'-0"



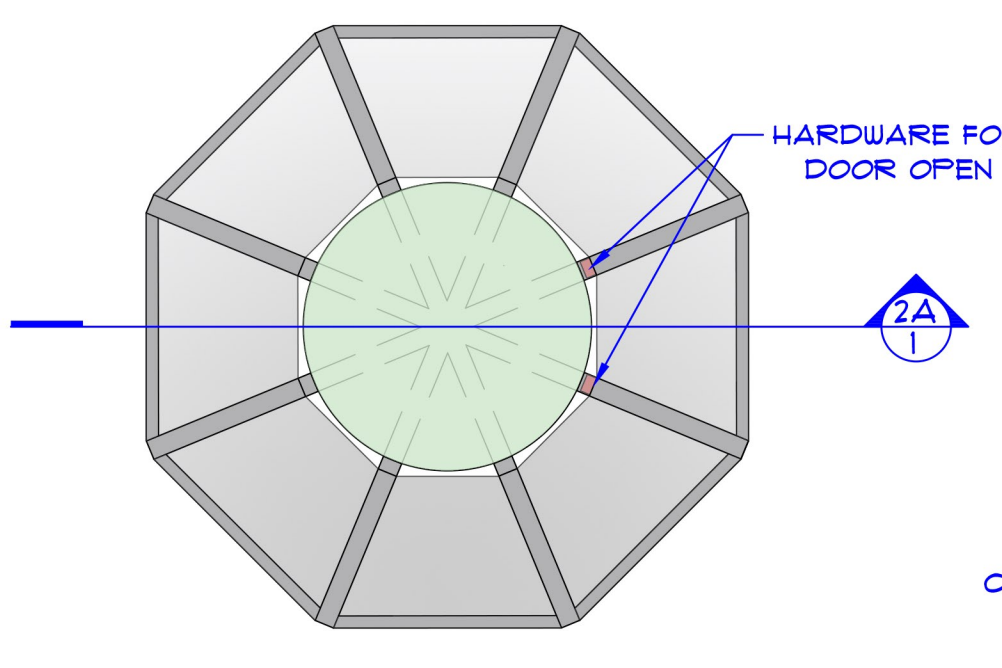
2A BODY SECTION CUT 1-B  
SCALE: 1/2" = 1'-0"



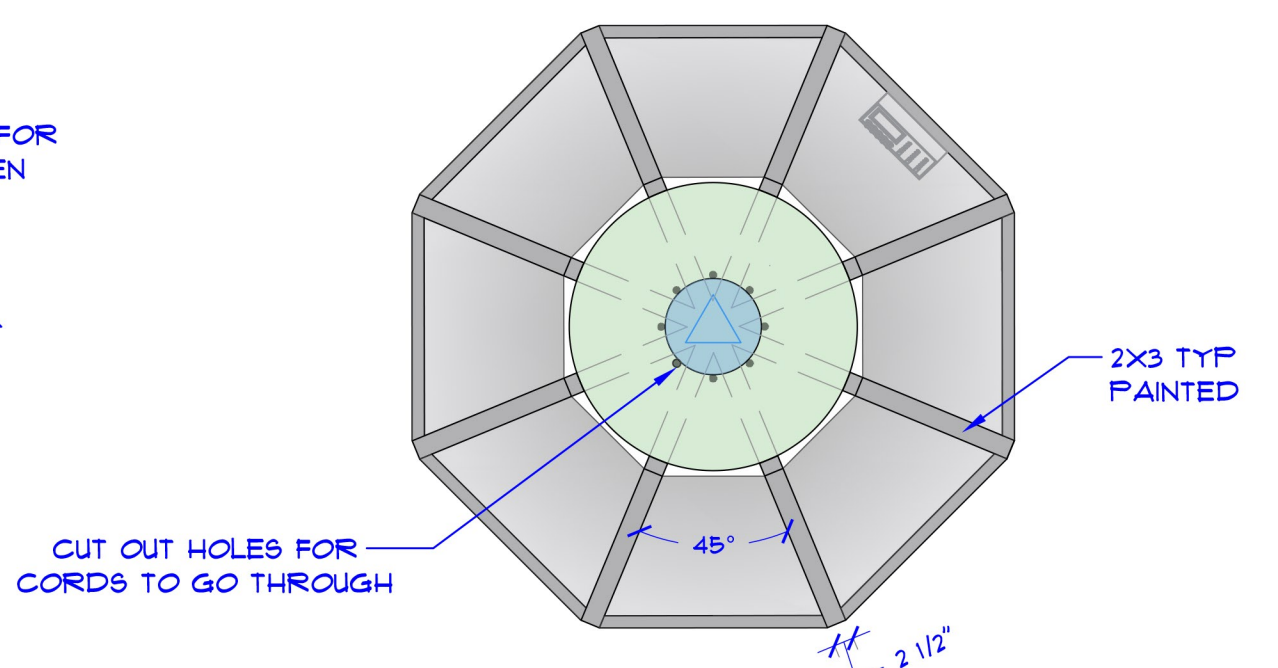
2D DOOR LIFTING ELEVATION  
SCALE: 1/2" = 1'-0"



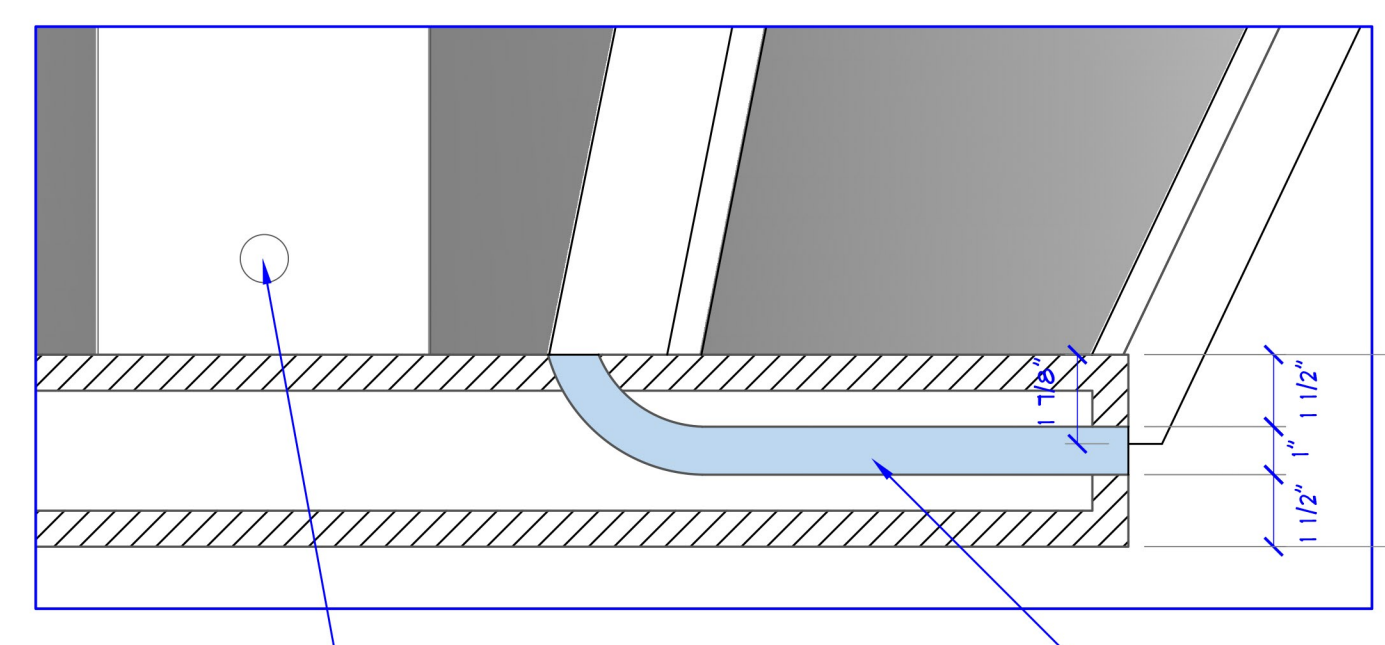
2E WINDOW ELEVATION (TRUE SIZE)  
SCALE: 1/2" = 1'-0"



2B BODY PLAN VIEW  
SCALE: 1/2" = 1'-0"



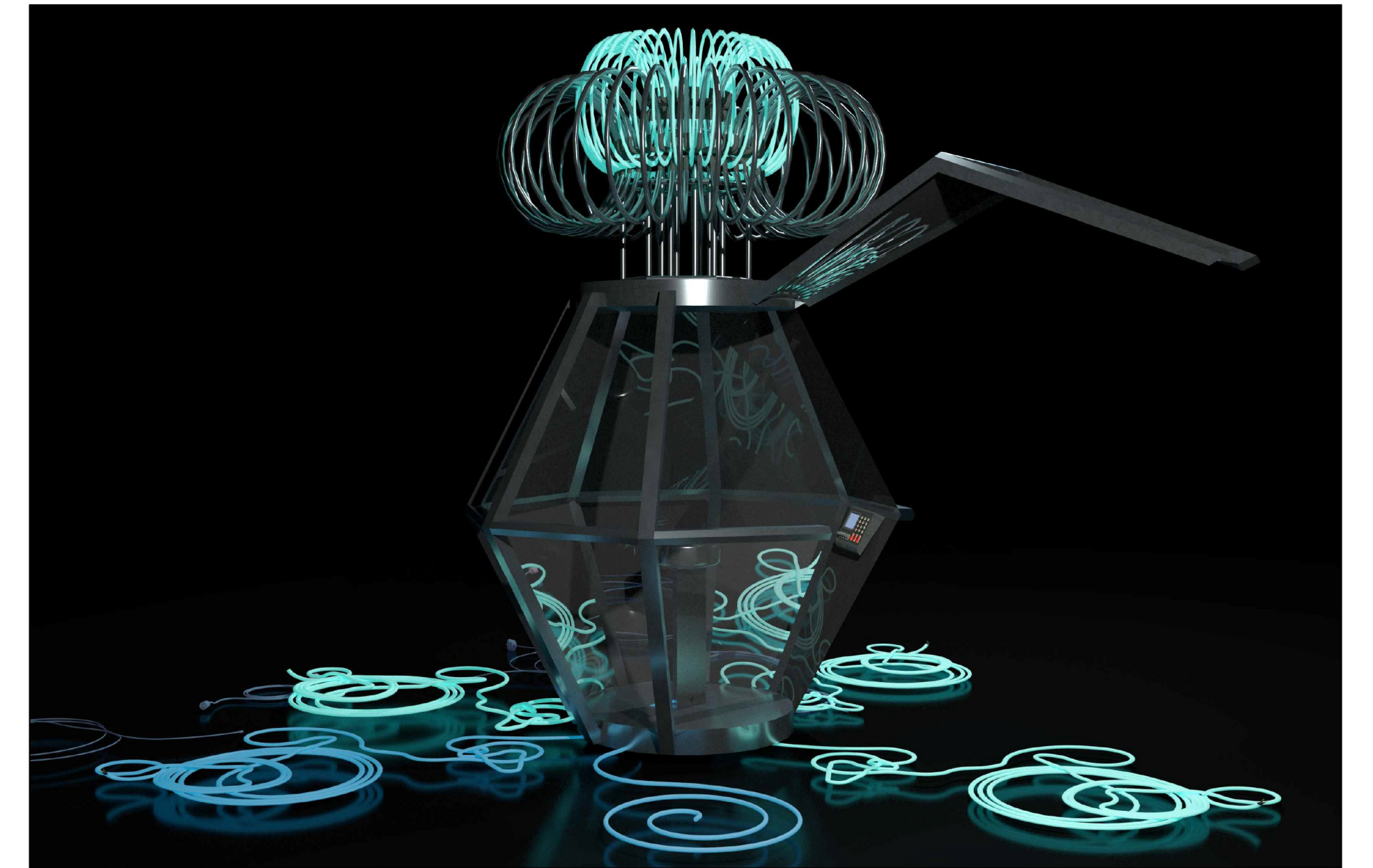
2C BODY PLANE CUT 1-C  
SCALE: 1/2" = 1'-0"



2F BASE DETAIL 1-E  
SCALE: 3" = 1'-0"

NOTES:

- CORD HOLES SIZE CAN BE ADJUSTED BASED ON THE CORDS IN STOCK

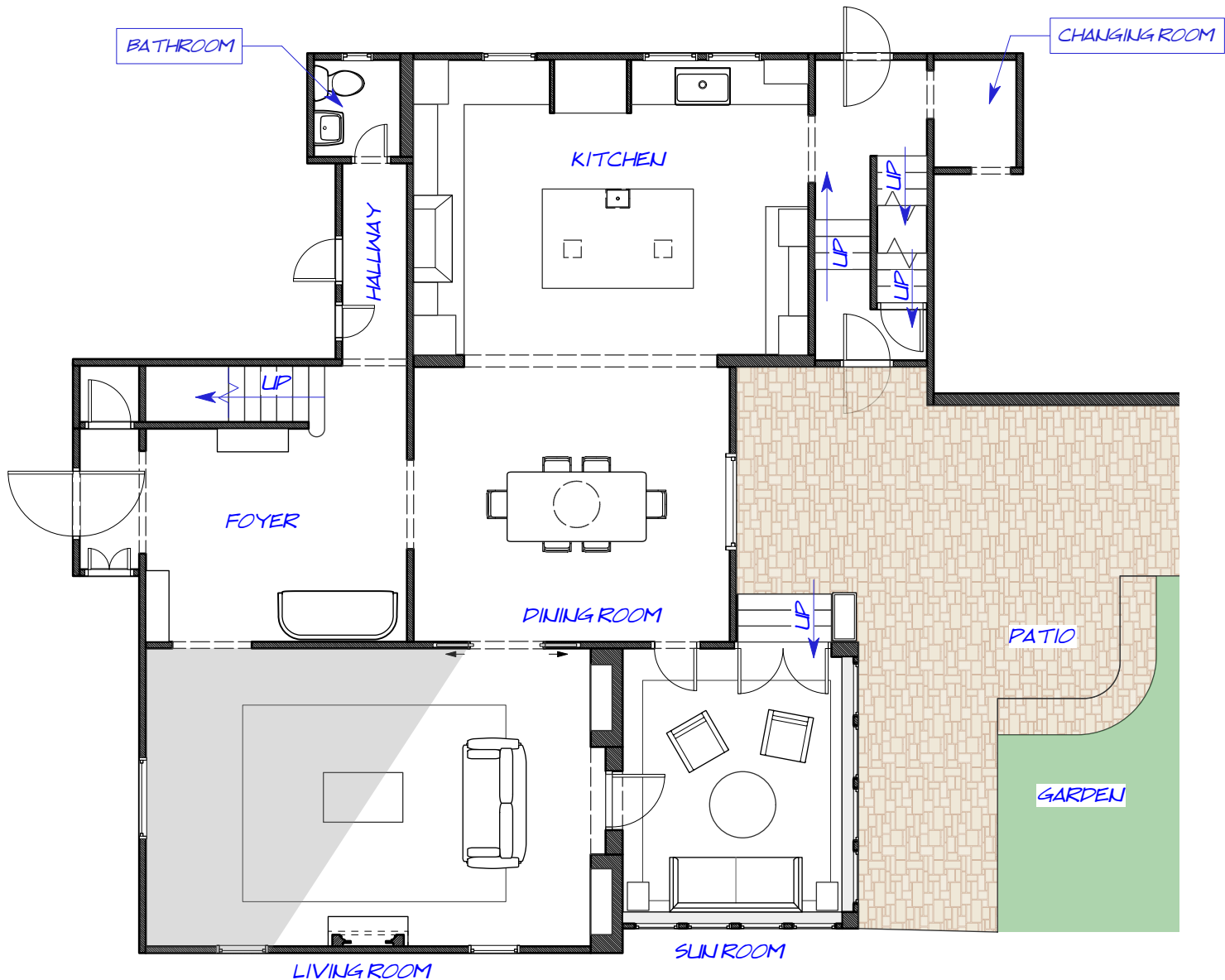
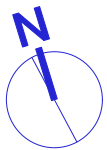


3D RENDERING

PRELIMINARY  
1/26/2022 11:40 AM

	SET NAME: MAD SCIENCE LAB	
	DRAWING: TIME MACHINE PAGE 1	
	LOCATION:	
	DRAWN BY: V. LIU	
EP #: XXX	SCALE: xx = 1'-0"	DATE: 01/26/2022
PRODUCTION DESIGNER JOSHUA PETERSON ART DIRECTOR SAM WEGNER	SET #: 205	DWG #: 1





DATE: 23/5/31  
 TIME: 10:20:52 AM

**Winston**  
 SEASON 1

PRODUCTION DESIGNER:  
 MATTHEW MUNN  
 ART DIRECTORS:  
 SIA BALABANOVA & CLAY BROWN  
 DRAWN BY:  
 VIVIENNE LIU 412.378.6030

SET NAME: INT. BARBARA'S HOUSE  
 LOCATION: 443 RIDGEWOOD AVE. GLEN RIDGE, NJ 07028  
 PREP DATE: TBD  
 SHOOT DATE: 06/15/23  
 WRAP DATE: TBD

SC#: ###  
 DWG: DIRECTORS PLAN  
 SCALE: AS NOTED

EPISODE#: 103  
 SET #: 127